



Cafesjian Art Trust

StoVentec® Glass Transforms
Museum Façade into Work of Art

Facades



Interiors



Mohagen Hansen
Architectural Group
specified StoVentec® Glass
to create a unique, colorful
façade for the retrofit of
the Cafesjian Art Trust.



Sto Products	StoVentec® Glass, StoVentro™ Sub-Construction
Architect	Mohagen Hansen Architecture
Applicator	United Glass
Contractor	Greiner Construction
Media Contact	Schoeny Jones: sjones@stocorp.com Julie Chalpan: julie@focusunlimitedpr.com



A renowned Minnesota businessman and philanthropist, Gerald Cafesjian established the Cafesjian Art Trust in greater Minneapolis to share his collection of modern art with the public. Cafesjian had a particular passion for the medium of glass, inspiring him to assemble an extensive collection of contemporary glass sculptures from artists such as Victor Vasarely, Georges Braque, Joan Miro, Arshile Gorky, and more.

When the trust prepared for a change of address, they realized that the building's facade needed a substantial upgrade to better reflect the museum's mission and its artwork. Mohagen Hansen Architectural Group had a vision for a brilliant, colorful building exterior, brought to life with varying shades of blue StoVentec Glass.

Contemporary Take on Modern Museum

The Cafesjian Art Trust sits in a quiet neighborhood in Shoreview, MN. Designers sought a way to create a prominent and recognizable exterior for the building without disturbing the architectural balance of the community's surroundings.

"We were inspired by the art inside the museum and how we could reflect and express that on the exterior. The different sizes and shapes along the building hint at the beauty inside the museum and make it visually interesting."

Neil Missling | Mohagen Hansen Architecture Associate

StoVentec Glass in three shades of blue – 5002, 5013, 5017 – allowed architects to deliver a customized, visually compelling building facade that could be installed over the previous exterior walls, which were comprised of ribbed concrete and brick. StoVentec Glass is an open-joint drained and back-ventilated rainscreen wall system that combines superior air and weather tightness with thermal performance. The noncombustible continuous exterior insulation and continuous air and moisture barrier with StoVentro™ sub-construction produces an advanced high-performance wall assembly. StoVentec Glass panels are manufactured by fusing colors directly into the glass before the toughening process to create a permanent color that will not wear, scratch, fade, or incur water damage.





On the first visit to the site, the design team realized that the entrance to the building needed to be more prominent and recognizable. One goal of the design was to add an entry sequence and vestibule to clearly define the main entrance using I-beams.

StoVentec glass and carrier boards can be shaped to conform to any desired opening. The project team worked closely with Sto to craft custom shapes around I-beams that come through the walls. The use of StoVentec Glass allowed the glass to seamlessly connect to the adjacent material and clamshell around the beams.

As a retrofit project, the StoVentro subconstruction attached to the existing sound substrate with bracket connections, enabling the 1,700 square feet of StoVentec Glass panels to connect to a flat plate.



“The solutions from Sto enabled us to keep the exterior envelope intact so we avoided energy and water intrusion concerns. We were able to dress up the exterior without being invasive or labor intensive. The grid system allowed the freedom to choose sizes and colors to create our vision with a unique pattern.”

Neil Missling | Mohagen Hansen Architecture Associate



StoVentro sub-construction is an adjustable, thermally efficient structural system of brackets, rails, fasteners and accessories for rainscreen wall cladding assemblies. The sub-construction absorbs wind loads and dead loads present on the facade and incorporates corrosion resistance.

The new Cafesjian Art Trust museum opened in the fall of 2022.



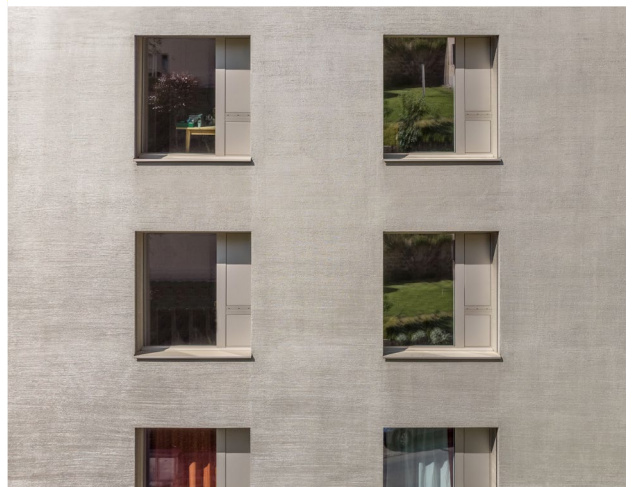
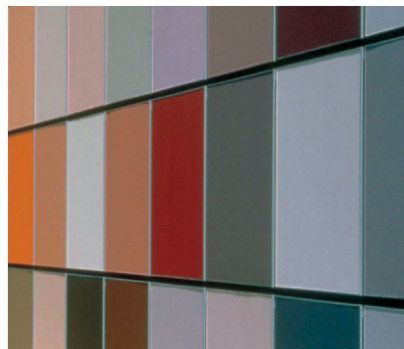
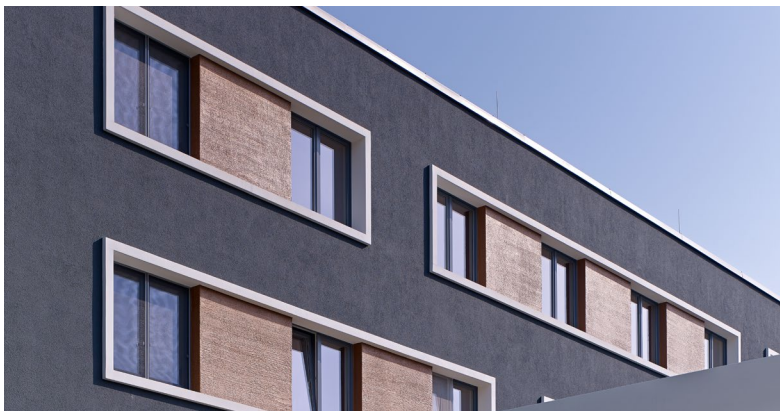


Inspiration favors the open mind

With Sto, your creative exploration can take you anywhere. Our proven products give you unmatched freedom and the ability to achieve your vision in any color, any form, any texture, any material.

StoVentec Rainscreen systems provide a wide range of aesthetic options and price points from glass, to stone, wood, mosaic and any combination in between. They bring form together with function in a complete, single source system, allowing you to create wall systems that are visually stunning, durable and thermally efficient. Imaginative design using StoVentec Glass, with the smooth, hard, reflective look of glass, can be accentuated with an adjacent StoVentec Render system. Featuring a wide range of color and texture options, StoVentec Render extends design possibilities, and helps you create a look that is uniquely appealing.

Creativity Begins. **Sto Finishes.**®



Sto Americas

Sto Corp.
3800 Camp Creek Pkwy
Building 1400, Suite 120
Atlanta, GA 30331
USA
Phone 1-800-221-2397
www.stocorp.com