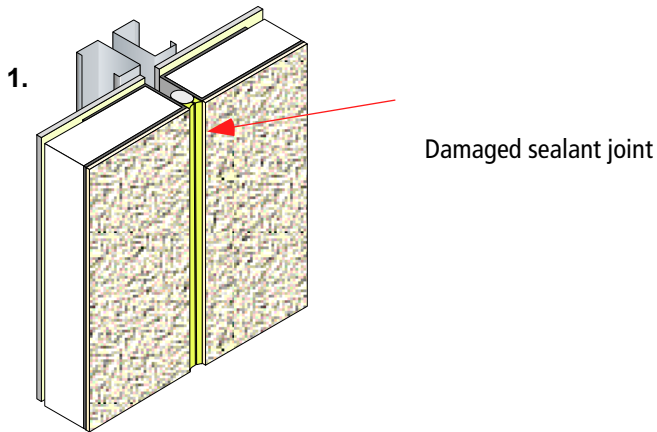


Sto reStore Membrane Joint Repair

Detail No.: 74.53

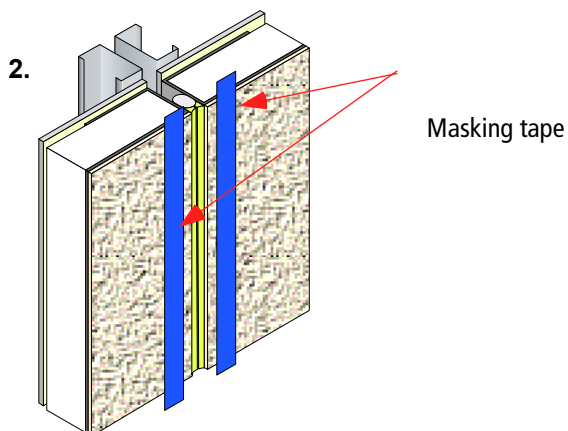
Date: February 2012



1. Procedure illustrates a preparation method for EIFS where a sealant joint has failed and covered with a membrane.

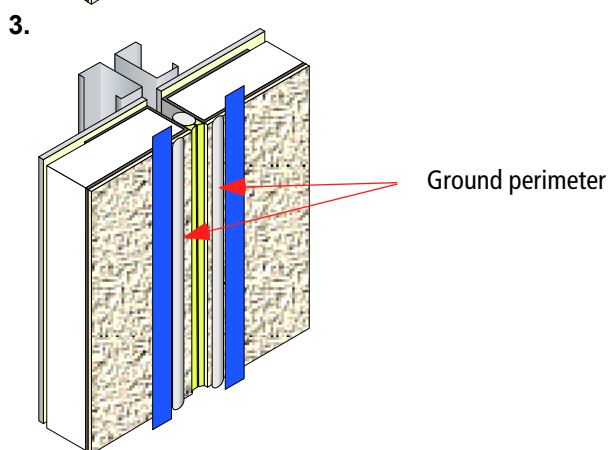
Note: Sealant is not part of the EIF system but is a normal component of construction installed to accommodate movement and maintain water deflection surface of the cladding assembly. Any

repair should be undertaken with consultation from the sealant supplier.

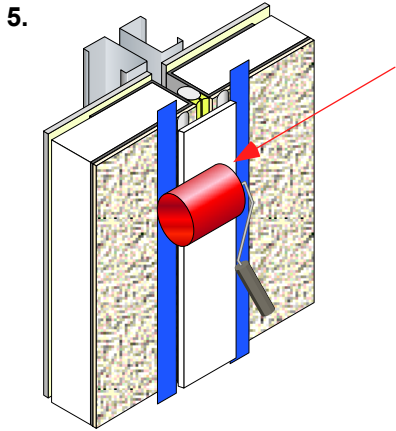


2. Follow the instructions and specifications of the supplier of the membrane joint cover.

Mask of the area on each side of the of sealant joint.

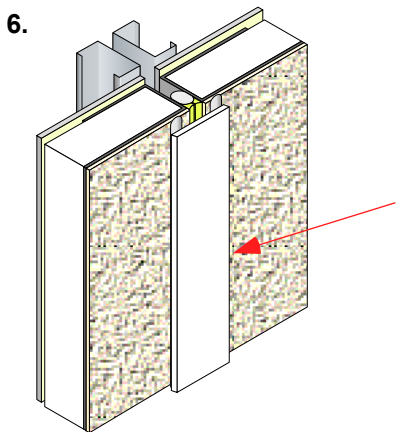


3. Add beads of sealant on either side of the joint.



Apply membrane and pressure roll

5. Immediately embed the joint membrane into the wet sealant and pressure roll with a hard roller.



Completed repair

6. Tool any wet sealant on the tape into the edge of the membrane before removing the masking tape. If the sealant has cured prior to removing the tape then carefully slice the sealant along the edge of the membrane prior to removing the masking tape.

Sto Corp.
 3800 Camp Creek Parkway
 Building 1400, Suite 120
 Atlanta, GA 30331
 Phone 404-346-3666
 Toll Free 888-786-3437
 Fax 404-346-3119
www.stocorp.com

Attention

Sto products are intended for use by qualified professional contractors, not consumers, as a component of a larger construction assembly as specified by a qualified design professional, general contractor or builder. They should be installed in accordance with those specifications and Sto's instructions. Sto Corp. disclaims all, and assumes no, liability for on-site inspections, for its products applied improperly, or by unqualified persons or entities, or as part of an improperly designed or constructed building, for the nonperformance of adjacent building components or assemblies, or for other construction activities beyond Sto's control. Improper use of Sto products or use as part of an improperly designed or constructed larger assembly or building may result in serious damage to Sto products, and to the structure of the building or its components. **STO CORP DISCLAIMS ALL WARRANTIES EXPRESS OR IMPLIED EXCEPT FOR EXPLICIT LIMITED WRITTEN WARRANTIES ISSUED TO AND ACCEPTED BY BUILDING OWNERS IN ACCORDANCE WITH STO'S WARRANTY PROGRAMS WHICH ARE SUBJECT TO**

CHANGE FROM TIME TO TIME. For the fullest, most current information on proper application, clean-up, mixing and other specifications and warranties, cautions and disclaimers, please refer to the Sto Corp. website, www.stocorp.com.