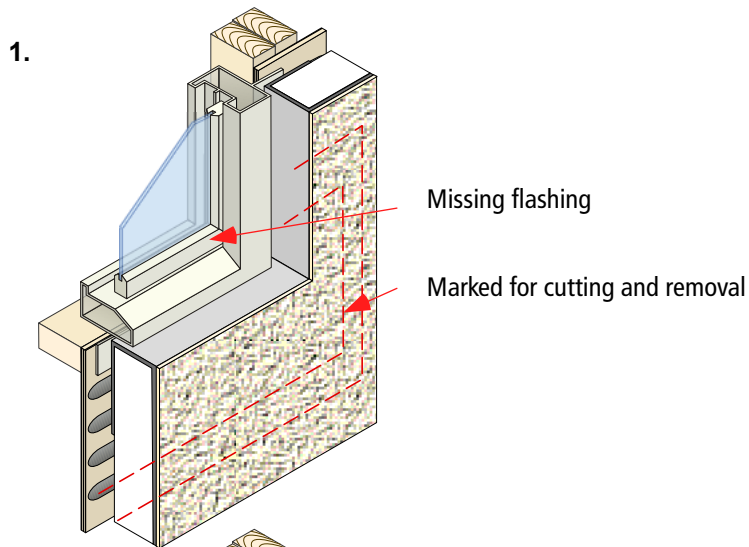


Sto reStore Installing Missing Sill Flashing

Detail No.: 74.22

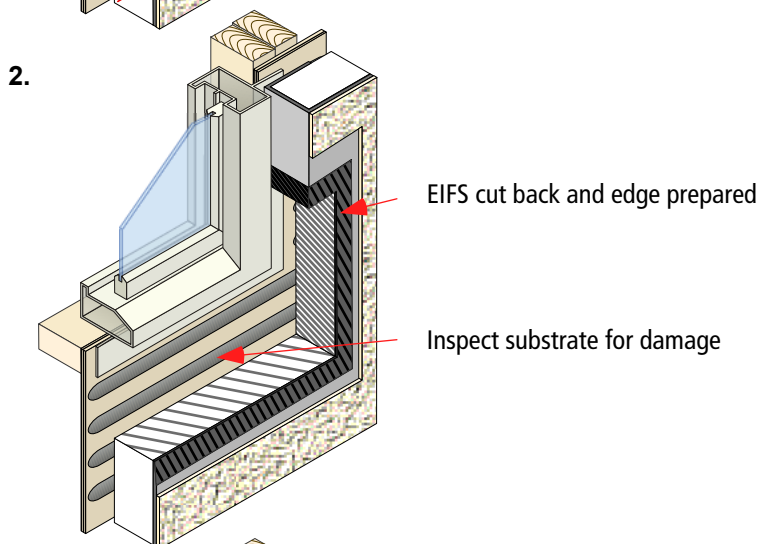
Date: January 2012



1. Procedure illustrates a method for installing a flashing under a nail flange window without removing the window.

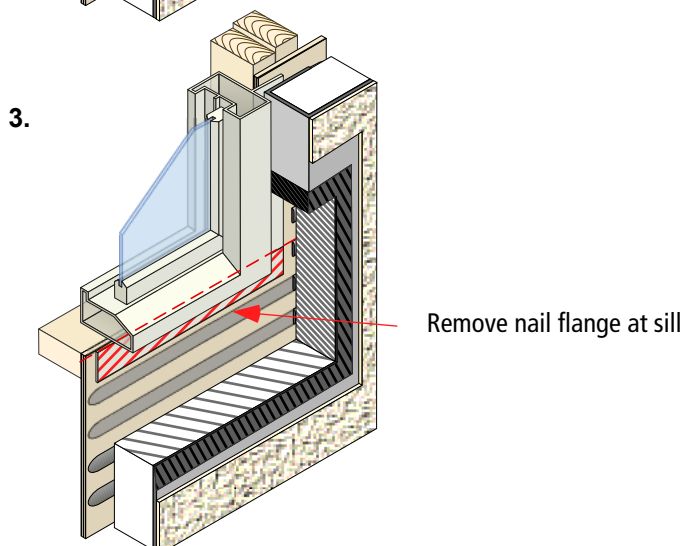
Most building codes require a sill flashing under all windows that will drain water to the exterior of the cladding. With a nail flange window, if the flange is sealed to the wall then water intrusion will be trapped in the wall assembly inbound of any weather barriers. This method places a flashing under the window to direct penetrating water to the exterior.

Provide protection from inclement weather until the repair is complete.



2. Cut back the EIFS and prepare the perimeter as outlined in Sto reStore Detail 72.50.

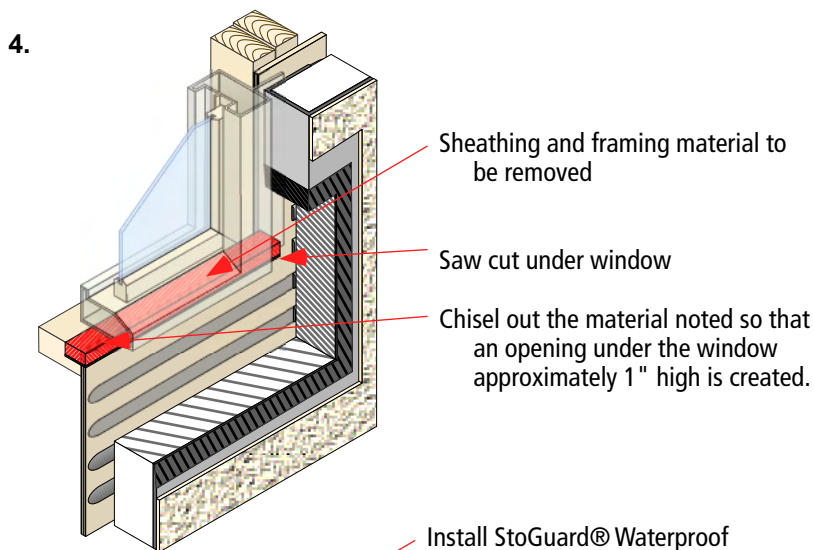
Inspect the wood sheathing and framing for any water damage. If any damage is detected, stop work and contact experts for further remedial action.



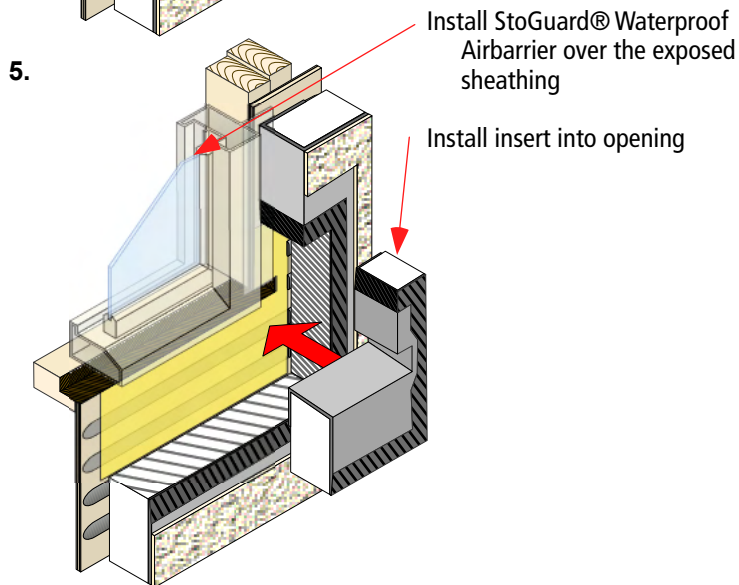
3. Clean off remaining EIFS adhesive and any other deleterious materials from the surface of the sheathing.

Cut and remove the sill nail flange from the window.

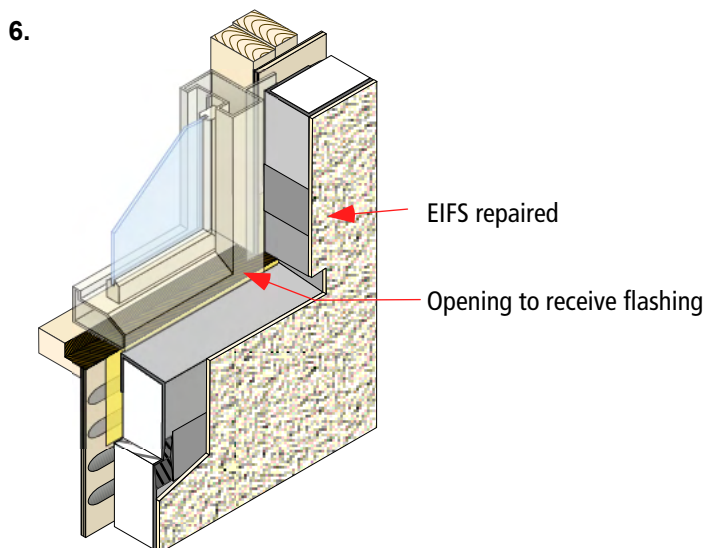
As mentioned above, inspect the wood behind the flange location for any water damage.



4. Mark an area approximately 1" (25 mm) below the rough opening and saw cut the sheathing and into the sill plate. Chisel or rout out the sheathing and sill plate as noted.



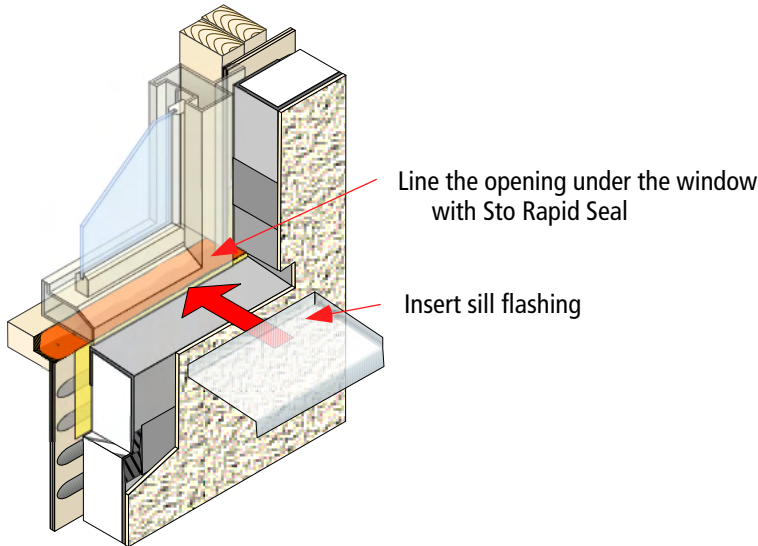
5. Coat the sheathing and into the new opening with StoGuard® Waterproof Airbarrier. Prepare a prewrapped EIFS insert as per Sto reStore Detail 72.50 to replace the EIFS removed. Ultimately (Step 7) a new sill flashing will be inserted into the opening. Design the infill piece to accommodate the new flashing. The new piece should be sloped to allow the flashing to drain away from the wall.



6. Finish the installation of the new EIFS as per Sto reStore Detail 72.50. The finish may return into the opening (not illustrated here) depending on the location of the window and sealant installed between the window and the EIFS base coat. Do not install finish in any location that is to receive sealant.

Protect the new finish until dry.

7.

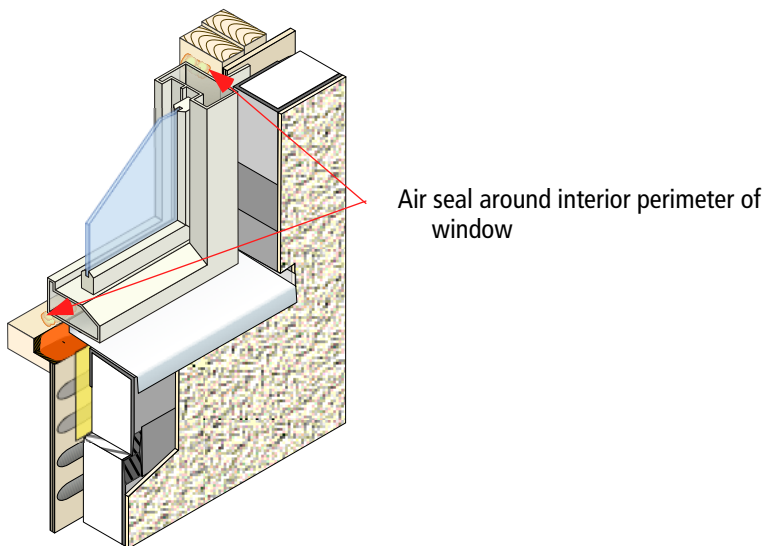


7. Line the newly created opening under the window with Sto Rapid Seal. Inject it into the opening using a caulking gun and smooth it out as much as possible with putty knife or brush.

Immediately insert the new sill flashing into the wet Rapid Seal and allow to cure. Depending on the configuration of the sill, opening and flashing it may be necessary to set the sill into a bed of

sealant placed on the EIFS sill and jamb cutout.

8.



8. Install new backer rod and sealant between window and EIFS. If sealant is placed between the window and new flashing then ensure openings be left to allow water escape.

Around the interior perimeter of the window

install an airseal.

Depending on the age of the original finish the repair may remain visible as a repair. Texture may be slightly different from the original and the color may differ slightly. Over time the repair will 'weather-in' and be less noticeable.

For 7202 Repairs with Texture Coating refer to Sto Finish 7201 Repairs with Smooth Coating

Sto Corp.
 3800 Camp Creek Parkway
 Building 1400, Suite 120
 Atlanta, GA 30331
 Phone 404-346-3666
 Toll Free 888-786-3437
 Fax 404-346-3119
www.stocorp.com

Attention

Sto products are intended for use by qualified professional contractors, not consumers, as a component of a larger construction assembly as specified by a qualified design professional, general contractor or builder. They should be installed in accordance with those specifications and Sto's instructions. Sto Corp. disclaims all, and assumes no, liability for on-site inspections, for its products applied improperly, or by unqualified persons or entities, or as part of an improperly designed or constructed building, for the nonperformance of adjacent building components or assemblies, or for other construction activities beyond Sto's control. Improper use of Sto products or use as part of an improperly designed or constructed larger assembly or building may result in serious damage to Sto products, and to the structure of the building or its components. **STO CORP. DISCLAIMS ALL WARRANTIES EXPRESS OR IMPLIED EXCEPT FOR EXPLICIT LIMITED WRITTEN WARRANTIES ISSUED TO AND ACCEPTED BY BUILDING OWNERS IN ACCORDANCE WITH STO'S WARRANTY PROGRAMS WHICH ARE SUBJECT TO**

CHANGE FROM TIME TO TIME. For the fullest, most current information on proper application, clean-up, mixing and other specifications and warranties, cautions and disclaimers, please refer to the Sto Corp. website, www.stocorp.com.