

Detail No.: **51.90**
Date: **October 2023**
Page: **1 of 3**

Notes:

1. StoPanel® Mineral ci is a prefabricated exterior wall panel with noncombustible continuous insulation and continuous air and water resistive barrier (AWRB). The panel can be finished with a wide variety of Sto textured finishes, Sto specialty finishes, and StoCast finishes.
2. Alternative air and water resistive barriers (AWRB): Sto Gold Coat®, Sto AirSeal®, and StoGuard® VaporSeal.
3. Vertical ribbons of adhesive to provide channels for drainage.
4. Mineral Wool or Stone Wool Insulation as listed by Sto Corp. Refer to StoPanel® Mineral ci Specification for more information.
5. Alternative Edge and Joint Treatment: Sto RapidGuard®.
6. 2-3/8" inch diameter (60mm) Sto Thermo Dowel with 1/4" (6 mm) corrosion resistant star head type screw fastener. Refer to page 3 for Sto Thermo Cap Wool.
7. Consult with Sto Corp. Technical Dept. for additional information about supplemental fastener rings for increased wind-load performance.
8. Components not identified as Sto are furnished by other manufacturers.

ATTENTION

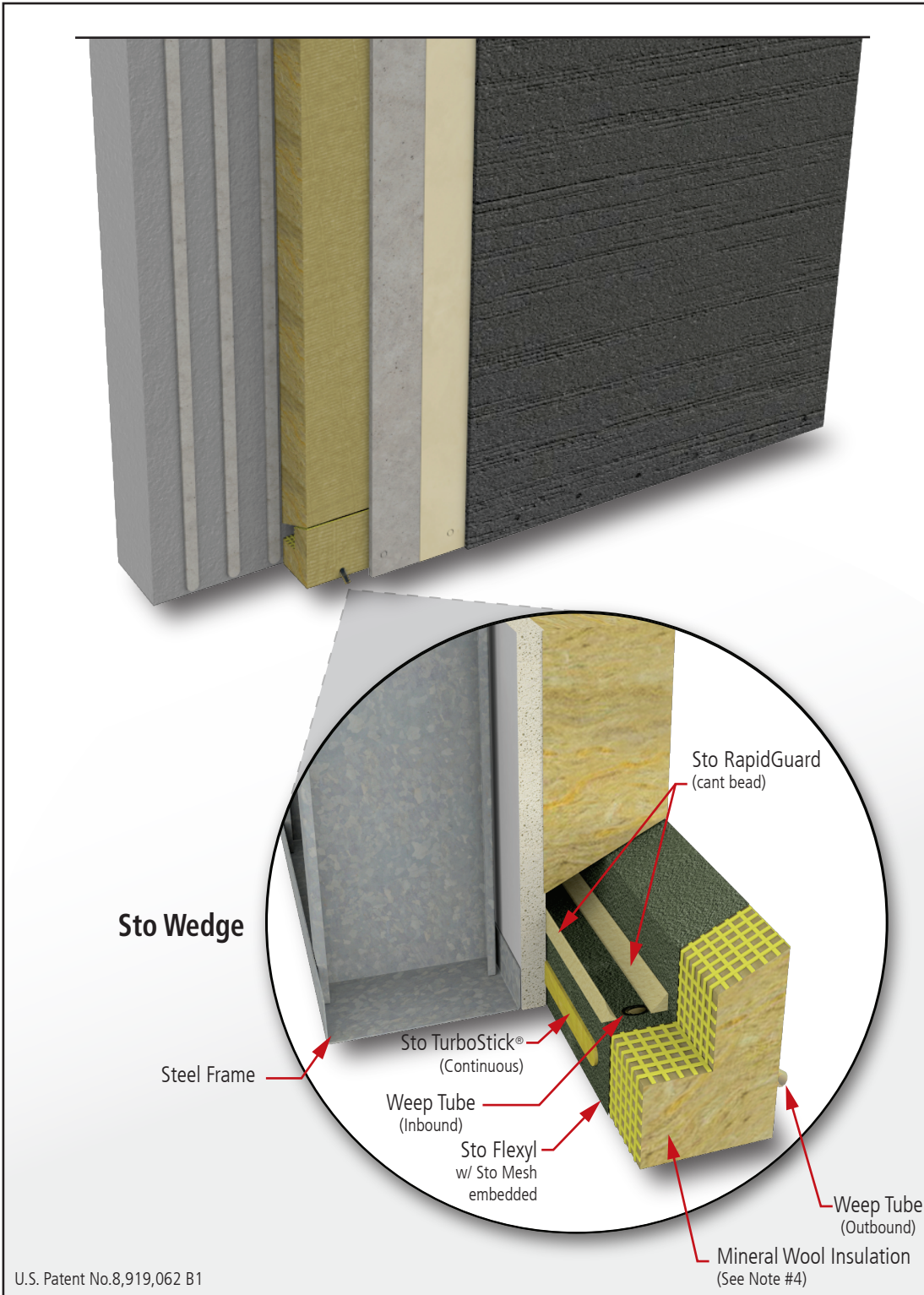
Property of Sto Corp. All Rights Reserved.

Sto products are intended for use by qualified professional contractors, not consumers, as a component of a larger construction assembly as specified by a qualified design professional, general contractor or builder. They should be installed in accordance with those specifications and Sto's instructions. Sto Corp. disclaims all, and assumes no, liability for on-site inspections, for its products applied improperly, or by unqualified persons or entities, or as part of an improperly designed or constructed building, for the nonperformance of adjacent building components or assemblies, or for other construction activities beyond Sto's control. Improper use of Sto products or use as part of an improperly designed or constructed larger assembly or building may result in serious damage to Sto products, and to the structure of the building or its components.

STO CORP. DISCLAIMS ALL WARRANTIES EXPRESSED OR IMPLIED EXCEPT FOR EXPLICIT LIMITED WRITTEN WARRANTIES ISSUED TO AND ACCEPTED BY BUILDING OWNERS IN ACCORDANCE WITH STO'S WARRANTY PROGRAMS WHICH ARE SUBJECT TO CHANGE FROM TIME TO TIME. For the fullest, most current information on proper application, clean-up, mixing and other specifications and warranties, cautions and disclaimers, please refer to the Sto Corp. website, www.stocorp.com.

www.stopanel.com





U.S. Patent No.8,919,062 B1

Detail No.: **51.90**
 Date: **October 2023**
 Page: **2 of 3**

Notes:

1. StoPanel® Mineral ci is a prefabricated exterior wall panel with noncombustible continuous insulation and continuous air and water resistive barrier (AWRB). The panel can be finished with a wide variety of Sto textured finishes, Sto specialty finishes, and StoCast finishes.
2. Alternative air and water resistive barriers (AWRB): Sto Gold Coat®, Sto AirSeal®, and StoGuard® VaporSeal.
3. Vertical ribbons of adhesive to provide channels for drainage.
4. Mineral Wool or Stone Wool Insulation as listed by Sto Corp. Refer to StoPanel® Mineral ci Specification for more information.
5. Alternative Edge and Joint Treatment: Sto RapidGuard®.
6. 2-3/8" inch diameter (60mm) Sto Thermo Dowel with 1/4" (6 mm) corrosion resistant star head type screw fastener. Refer to page 3 for Sto Thermo Cap Wool.
7. Consult with Sto Corp. Technical Dept. for additional information about supplemental fastener rings for increased wind-load performance.
8. Components not identified as Sto are furnished by other manufacturers.

ATTENTION

Property of Sto Corp. All Rights Reserved.

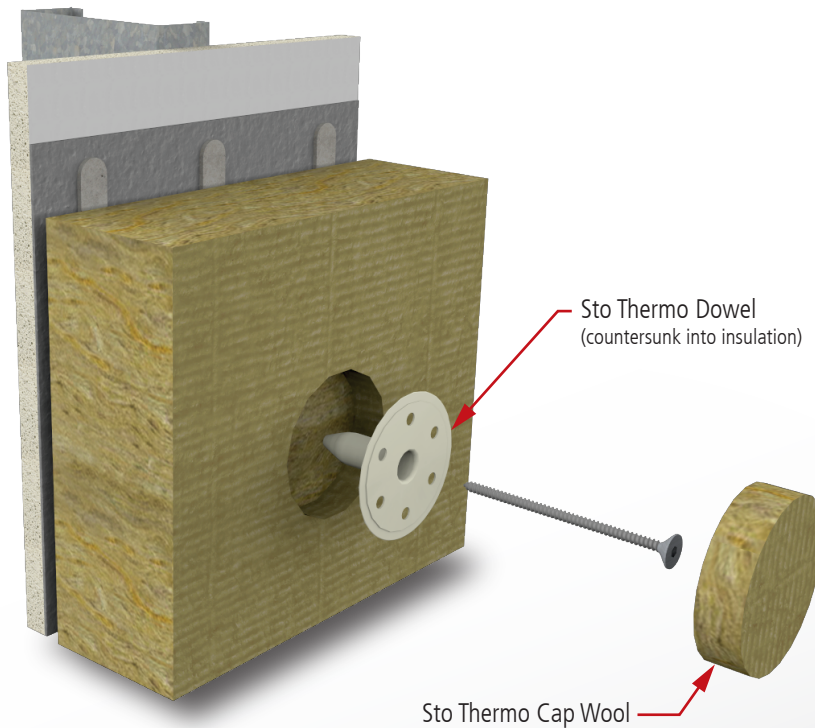
Sto products are intended for use by qualified professional contractors, not consumers, as a component of a larger construction assembly as specified by a qualified design professional, general contractor or builder. They should be installed in accordance with those specifications and Sto's instructions. Sto Corp. disclaims all, and assumes no, liability for on-site inspections, for its products applied improperly, or by unqualified persons or entities, or as part of an improperly designed or constructed building, for the nonperformance of adjacent building components or assemblies, or for other construction activities beyond Sto's control. Improper use of Sto products or use as part of an improperly designed or constructed larger assembly or building may result in serious damage to Sto products, and to the structure of the building or its components.

STO CORP. DISCLAIMS ALL WARRANTIES EXPRESSED OR IMPLIED EXCEPT FOR EXPLICIT LIMITED WRITTEN WARRANTIES ISSUED TO AND ACCEPTED BY BUILDING OWNERS IN ACCORDANCE WITH STO'S WARRANTY PROGRAMS WHICH ARE SUBJECT TO CHANGE FROM TIME TO TIME. For the fullest, most current information on proper application, clean-up, mixing and other specifications and warranties, cautions and disclaimers, please refer to the Sto Corp. website, www.stocorp.com.

www.stopanel.com



Mechanical Fastening with Sto Thermo Dowel



Detail No.: **51.90**

Date: **October 2023**

Page: **3 of 3**

Notes:

1. StoPanel® Mineral ci is a prefabricated exterior wall panel with noncombustible continuous insulation and continuous air and water resistive barrier (AWRB). The panel can be finished with a wide variety of Sto textured finishes, Sto specialty finishes, and StoCast finishes.

2. Alternative air and water resistive barriers (AWRB): Sto Gold Coat®, Sto AirSeal®, and StoGuard® VaporSeal.

3. Vertical ribbons of adhesive to provide channels for drainage.

4. Mineral Wool or Stone Wool Insulation as listed by Sto Corp. Refer to StoPanel® Mineral ci Specification for more information.

5. Alternative Edge and Joint Treatment: Sto RapidGuard®.

6. 2-3/8" inch diameter (60mm) Sto Thermo Dowel with 1/4" (6 mm) corrosion resistant star head type screw fastener.

7. Consult with Sto Corp. Technical Dept. for additional information about supplemental fastener rings for increased wind-load performance.

8. Components not identified as Sto are furnished by other manufacturers.

ATTENTION

Property of Sto Corp. All Rights Reserved.

Sto products are intended for use by qualified professional contractors, not consumers, as a component of a larger construction assembly as specified by a qualified design professional, general contractor or builder. They should be installed in accordance with those specifications and Sto's instructions. Sto Corp. disclaims all, and assumes no, liability for on-site inspections, for its products applied improperly, or by unqualified persons or entities, or as part of an improperly designed or constructed building, for the nonperformance of adjacent building components or assemblies, or for other construction activities beyond Sto's control. Improper use of Sto products or use as part of an improperly designed or constructed larger assembly or building may result in serious damage to Sto products, and to the structure of the building or its components.

STO CORP. DISCLAIMS ALL WARRANTIES EXPRESSED OR IMPLIED EXCEPT FOR EXPLICIT LIMITED WRITTEN WARRANTIES ISSUED TO AND ACCEPTED BY BUILDING OWNERS IN ACCORDANCE WITH STO'S WARRANTY PROGRAMS WHICH ARE SUBJECT TO CHANGE FROM TIME TO TIME. For the fullest, most current information on proper application, clean-up, mixing and other specifications and warranties, cautions and disclaimers, please refer to the Sto Corp. website, www.stocorp.com.

www.stopanel.com

