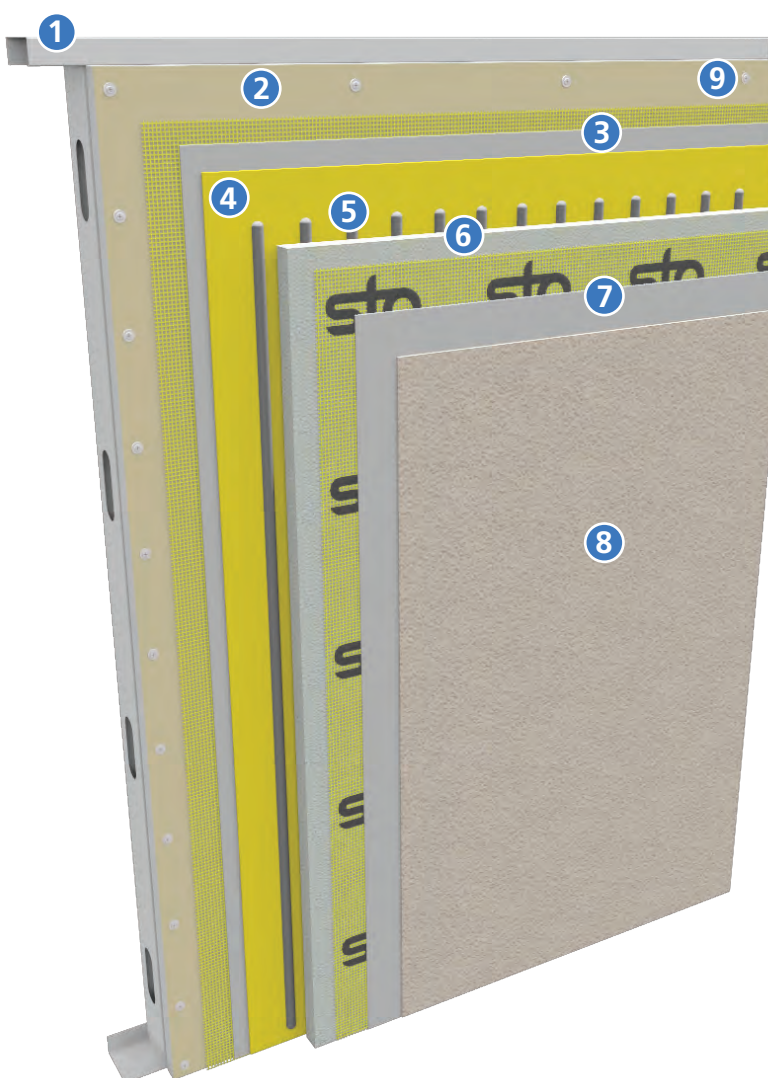


StoTherm® - 1177-LM-150
Large Missile Hurricane Impact Resistant System
Miami-Dade County NOA # 18-0319.15 Expires: 08/11/2021

Detail No.: 10H.14
Date: April 2019



- 1 6", 16 ga. Steel Studs at 16-inches on-center.
- 2 5/8-inch fiberglass faced ASTM C-1177 sheathing
- 3 Sto Armor Mat XX Embedded in Sto Primer/Adhesive-B
- 4 Sto Gold Coat®
- 5 Sto Primer/Adhesive-B
- 6 Miami-Dade County Listed EPS, 1.0 pcf, Minimum 1-inch Thick
- 7 Sto Mesh Embedded in Sto Primer/Adhesive-B
- 8 Sto Finish
- 9 No. 6 x 1-1/4" Screws Spaced at 6 inches On-Center Along Studs in Field and Perimeter.

HVHZ
Design Pressure:
 ± 150 p.s.f.

Property of Sto Corp. All Rights Reserved.

Notes:

1. Comply with written requirements presented in official Notice of Acceptance available at www.stocorp.com and www.miamidade.gov.
2. Materials deemed equivalent or better may be substituted based on analysis by a qualified engineer and/or at the discretion of the local code official in locations outside of the High Velocity Hurricane Zone (Dade and Broward Counties).
3. Refer to Sto specifications and product bulletins for detailed information on mixing and application of products.

IMPORTANT: Components not identified as Sto are furnished by other manufacturers and are not necessarily installed by trades who install the Sto products. Refer to project specific contract documents.

ATTENTION

Sto products are intended for use by qualified professional contractors, not consumers, as a component of a larger construction assembly as specified by a qualified design professional, general contractor or builder. They should be installed in accordance with those specifications and Sto's instructions. Sto Corp. disclaims all, and assumes no, liability for on-site inspections, for its products applied improperly, or by unqualified persons or entities, or as part of an improperly designed or constructed building, for the nonperformance of adjacent building components or assemblies, or for other construction activities beyond Sto's control. Improper use of Sto products or use as part of an improperly designed or constructed larger assembly or building may result in serious damage to Sto products, and to the structure of the building or its components.

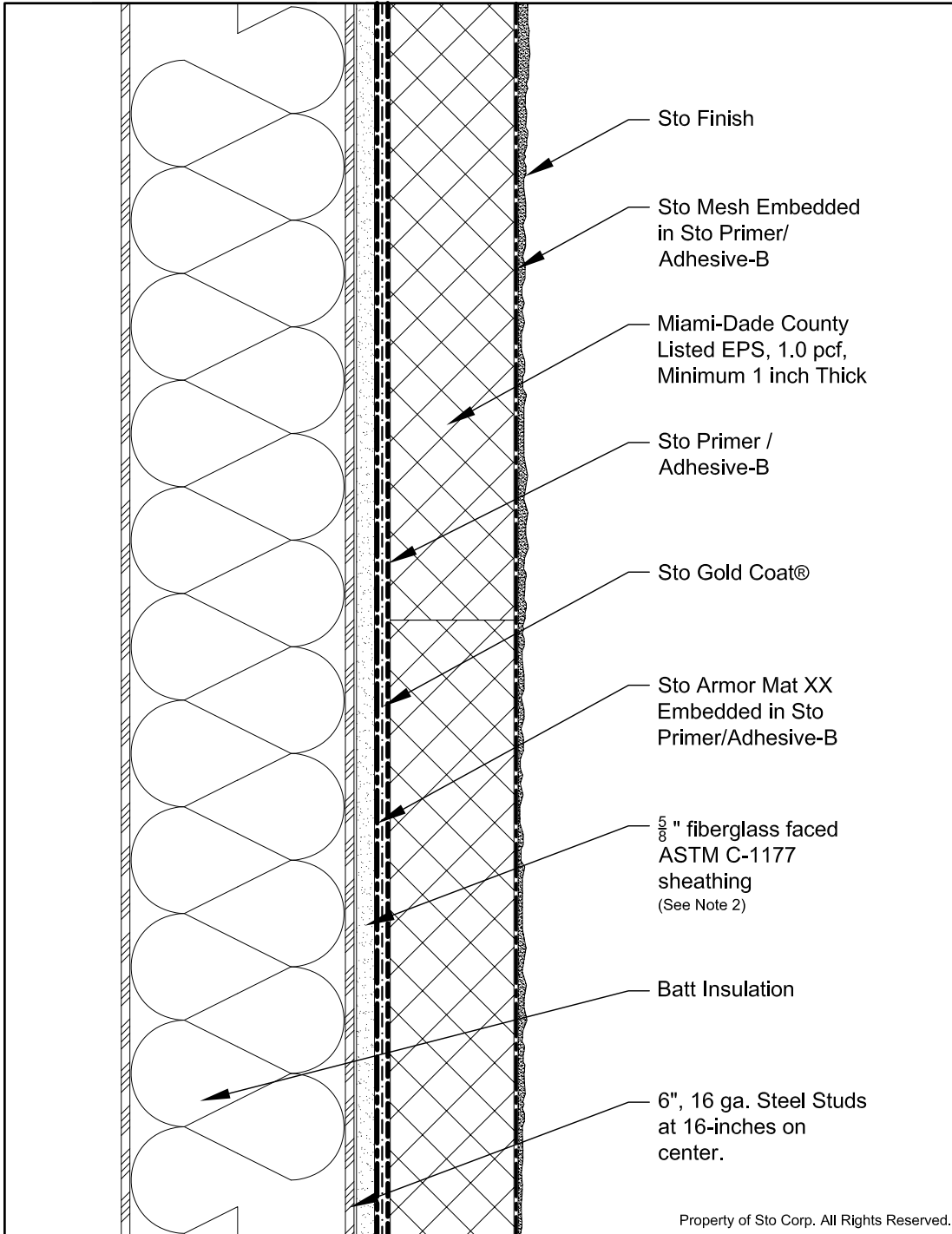
STO CORP. DISCLAIMS ALL WARRANTIES EXPRESSED OR IMPLIED EXCEPT FOR EXPLICIT LIMITED WRITTEN WARRANTIES ISSUED TO AND ACCEPTED BY BUILDING OWNERS IN ACCORDANCE WITH STO'S WARRANTY PROGRAMS WHICH ARE SUBJECT TO CHANGE FROM TIME TO TIME. For the fullest, most current information on proper application, clean-up, mixing and other specifications and warranties, cautions and disclaimers, please refer to the Sto Corp. website, www.stocorp.com.

www.stocorp.com



StoTherm® ci - 1177-LM-150 System Components

Detail No.: 10H.14.00
Date: February 2019



Notes:

1. System Components:

- 6", 16 ga. Steel Studs at 16-inches on center.
- 5/8" fiberglass faced ASTM C-1177 sheathing
- Sto Armor Mat XX Embedded in Sto Primer/Adhesive-B
- Gold Coat
- Sto Primer/Adhesive-B
- Miami-Dade County EPS, 1.0 pcf, Minimum 1-inch Thick
- Sto Mesh Embedded in Sto Primer/Adhesive-B
- Sto Finish

2. ASTM C1177 Compliant Sheathing Options:

- National Gypsum eXP
 - USG Securock
 - Continental Weather Defense
- Components not identified as Sto are furnished by other manufacturers and are not necessarily installed by trades who install Sto products. Refer to project specific contract documents.

ATTENTION

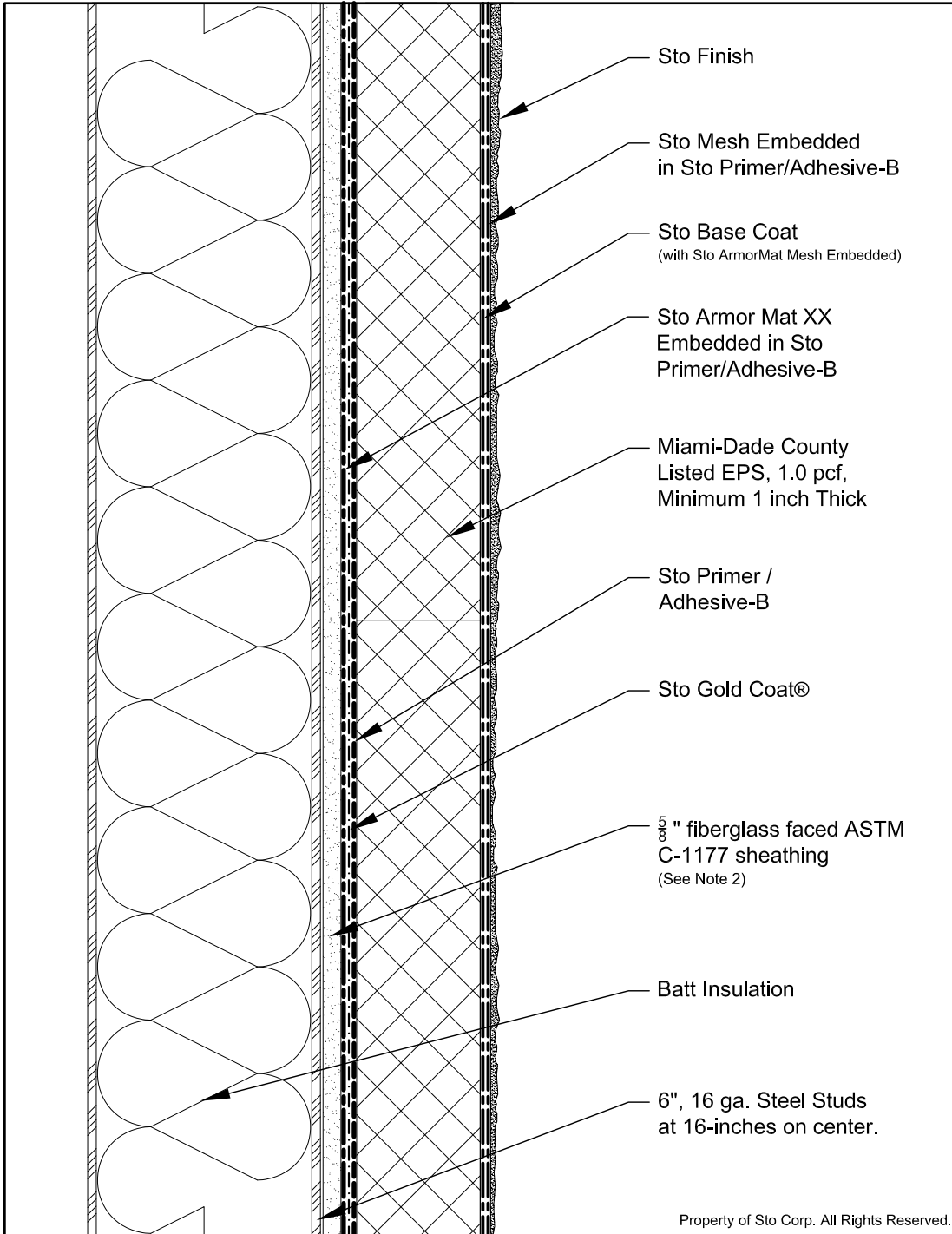
Sto products are intended for use by qualified professional contractors, not consumers, as a component of a larger construction assembly as specified by a qualified design professional, general contractor or builder. They should be installed in accordance with those specifications and Sto's instructions. Sto Corp. disclaims all, and assumes no, liability for on-site inspections, for its products applied improperly, or by unqualified persons or entities, or as part of an improperly designed or constructed building, for the nonperformance of adjacent building components or assemblies, or for other construction activities beyond Sto's control. Improper use of Sto products or use as part of an improperly designed or constructed larger assembly or building may result in serious damage to Sto products, and to the structure of the building or its components.

STO CORP. DISCLAIMS ALL WARRANTIES EXPRESSED OR IMPLIED EXCEPT FOR EXPLICIT LIMITED WRITTEN WARRANTIES ISSUED TO AND ACCEPTED BY BUILDING OWNERS IN ACCORDANCE WITH STO'S WARRANTY PROGRAMS WHICH ARE SUBJECT TO CHANGE FROM TIME TO TIME. For the fullest, most current information on proper application, clean-up, mixing and other specifications and warranties, cautions and disclaimers, please refer to the Sto Corp. website, www.stocorp.com.

StoTherm[®]ci - 1177-LM-150

System Components: Ultra-High Impact Resistance

Detail No.: 10H.14.01
Date: February 2019



Notes:

1. System Components:

- 6", 16 ga. Steel Studs at 16-inches on center.
- $\frac{5}{8}$ " fiberglass faced ASTM C-1177 sheathing
- Sto Armor Mat XX Embedded in Sto Primer/Adhesive-B
- Gold Coat
- Sto Primer/Adhesive-B
- Miami-Dade County EPS, 1.0 pcf, Minimum 1-inch Thick
- Sto Mesh Embedded in Sto Primer/Adhesive-B
- Sto Finish

2. ASTM C1177 Compliant Sheathing Options:

- National Gypsum eXP
- USG Securock
- Continental Weather Defense

- Components not identified as Sto are furnished by other manufacturers and are not necessarily installed by trades who install Sto products. Refer to project specific contract documents.

ATTENTION

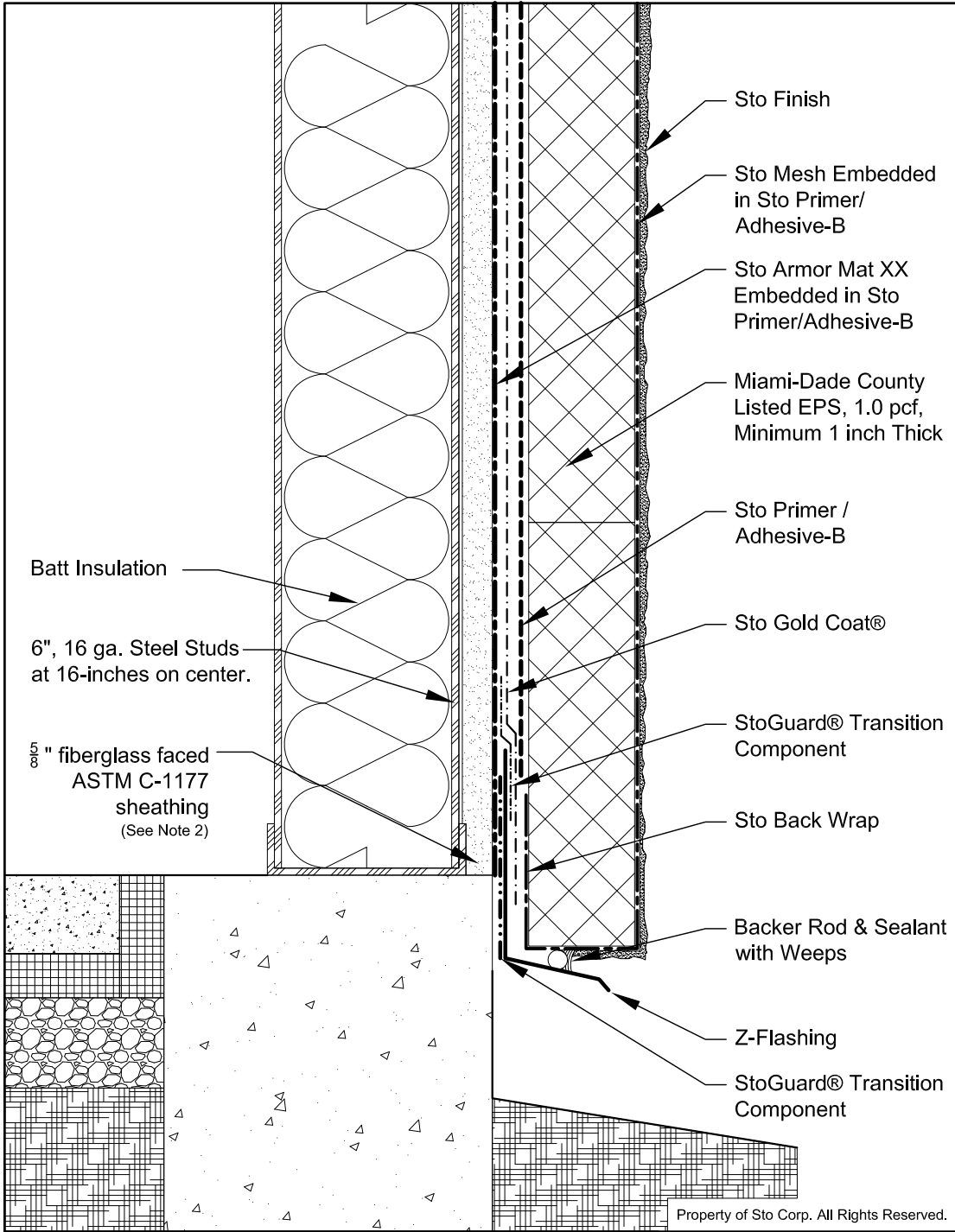
Sto products are intended for use by qualified professional contractors, not consumers, as a component of a larger construction assembly as specified by a qualified design professional, general contractor or builder. They should be installed in accordance with those specifications and Sto's instructions. Sto Corp. disclaims all, and assumes no, liability for on-site inspections, for its products applied improperly, or by unqualified persons or entities, or as part of an improperly designed or constructed building, for the nonperformance of adjacent building components or assemblies, or for other construction activities beyond Sto's control. Improper use of Sto products or use as part of an improperly designed or constructed larger assembly or building may result in serious damage to Sto products, and to the structure of the building or its components.

STO CORP. DISCLAIMS ALL WARRANTIES EXPRESSED OR IMPLIED EXCEPT FOR EXPLICIT LIMITED WRITTEN WARRANTIES ISSUED TO AND ACCEPTED BY BUILDING OWNERS IN ACCORDANCE WITH STO'S WARRANTY PROGRAMS WHICH ARE SUBJECT TO CHANGE FROM TIME TO TIME.

For the fullest, most current information on proper application, clean-up, mixing and other specifications and warranties, cautions and disclaimers, please refer to the Sto Corp. website, www.stocorp.com.

StoTherm® ci - 1177-LM-150
Termination at Grade
Sheathing Flush with Foundation or Slab Edge

Detail No.: 10H.14.03A
 Date: February 2019



Notes:

1. System Components:

- 6", 16 ga. Steel Studs at 16-inches on center.
- $\frac{5}{8}$ " fiberglass faced ASTM C-1177 sheathing
- Sto Armor Mat XX Embedded in Sto Primer/Adhesive-B
- Gold Coat
- Sto Primer/Adhesive-B
- Miami-Dade County EPS, 1.0 pcf, Minimum 1-inch Thick
- Sto Mesh Embedded in Sto Primer/Adhesive-B
- Sto Finish

2. ASTM C1177 Compliant Sheathing Options:

- National Gypsum eXP
- USG Securock
- Continental Weather Defense

- Components not identified as Sto are furnished by other manufacturers and are not necessarily installed by trades who install Sto products. Refer to project specific contract documents.

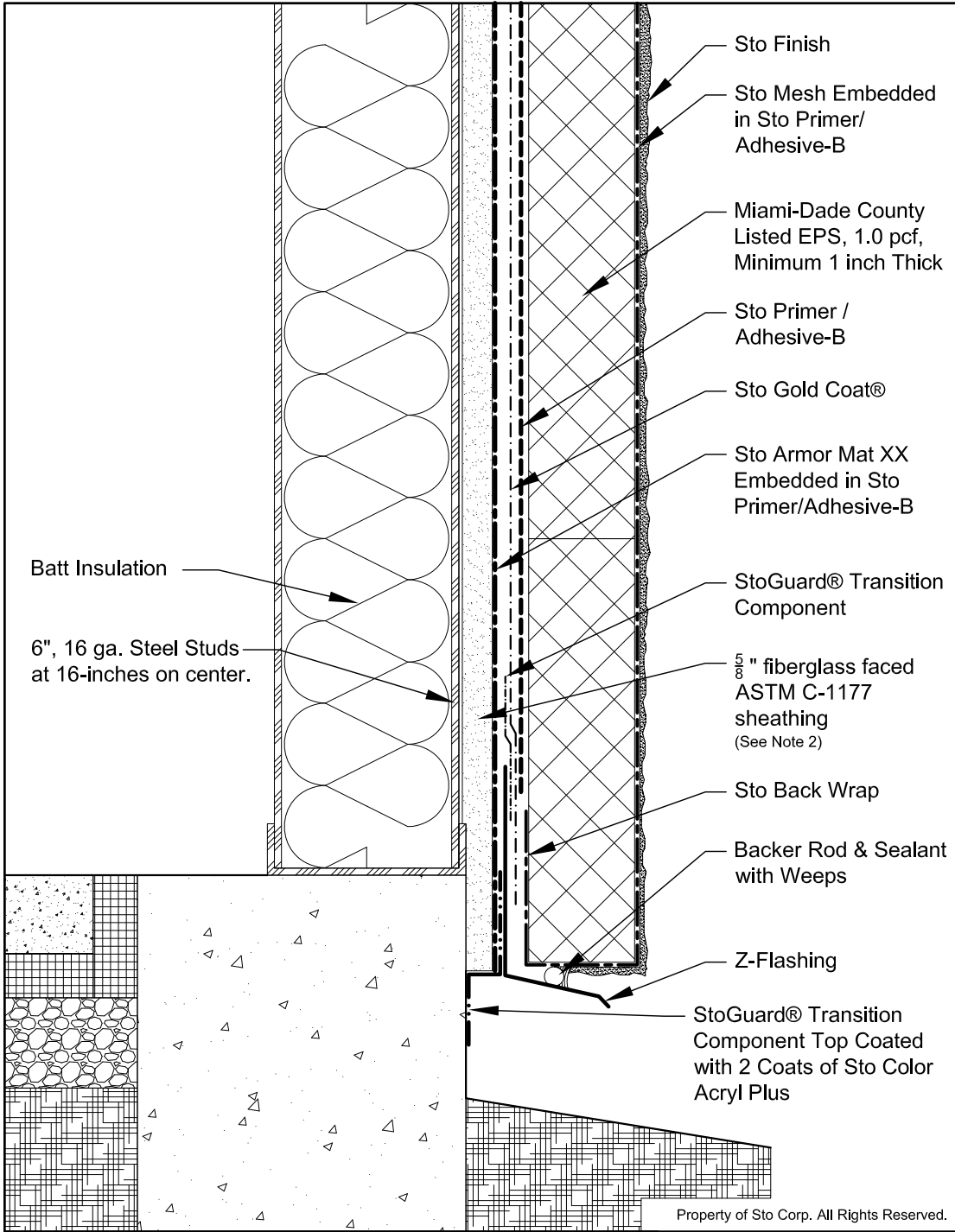
ATTENTION

Sto products are intended for use by qualified professional contractors, not consumers, as a component of a larger construction assembly as specified by a qualified design professional, general contractor or builder. They should be installed in accordance with those specifications and Sto's instructions. Sto Corp. disclaims all, and assumes no, liability for on-site inspections, for its products applied improperly, or by unqualified persons or entities, or as part of an improperly designed or constructed building, for the nonperformance of adjacent building components or assemblies, or for other construction activities beyond Sto's control. Improper use of Sto products or use as part of an improperly designed or constructed larger assembly or building may result in serious damage to Sto products, and to the structure of the building or its components.

STO CORP. DISCLAIMS ALL WARRANTIES EXPRESSED OR IMPLIED EXCEPT FOR EXPLICIT LIMITED WRITTEN WARRANTIES ISSUED TO AND ACCEPTED BY BUILDING OWNERS IN ACCORDANCE WITH STO'S WARRANTY PROGRAMS WHICH ARE SUBJECT TO CHANGE FROM TIME TO TIME. For the fullest, most current information on proper application, clean-up, mixing and other specifications and warranties, cautions and disclaimers, please refer to the Sto Corp. website, www.stocorp.com.

StoTherm® ci - 1177-LM-150
Termination at Grade
Sheathing Overlapping Slab or Foundation

Detail No.: 10H.14.03B
 Date: February 2019



- Notes:**
- System Components:**
 - 6", 16 ga. Steel Studs at 16-inches on center.
 - $\frac{5}{8}$ " fiberglass faced ASTM C-1177 sheathing
 - Sto Armor Mat XX Embedded in Sto Primer/Adhesive-B
 - Gold Coat
 - Sto Primer/Adhesive-B
 - Miami-Dade County EPS, 1.0 pcf, Minimum 1-inch Thick
 - Sto Mesh Embedded in Sto Primer/Adhesive-B
 - Sto Finish
 - ASTM C1177 Compliant Sheathing Options:**
 - National Gypsum eXP
 - USG Securock
 - Continental Weather Defense
- Components not identified as Sto are furnished by other manufacturers and are not necessarily installed by trades who install Sto products. Refer to project specific contract documents.

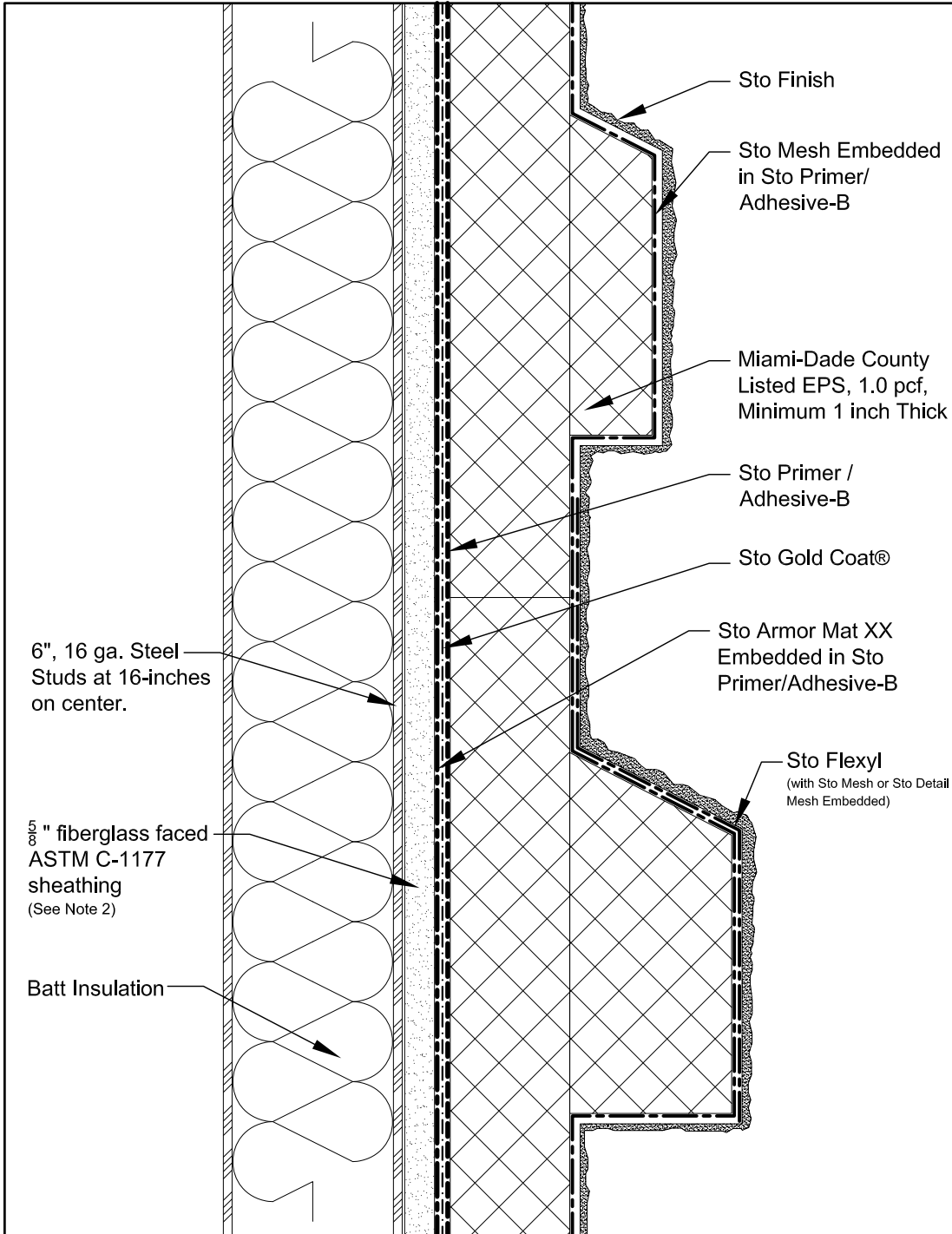
ATTENTION

Sto products are intended for use by qualified professional contractors, not consumers, as a component of a larger construction assembly as specified by a qualified design professional, general contractor or builder. They should be installed in accordance with those specifications and Sto's instructions. Sto Corp. disclaims all, and assumes no, liability for on-site inspections, for its products applied improperly, or by unqualified persons or entities, or as part of an improperly designed or constructed building, for the nonperformance of adjacent building components or assemblies, or for other construction activities beyond Sto's control. Improper use of Sto products or use as part of an improperly designed or constructed larger assembly or building may result in serious damage to Sto products, and to the structure of the building or its components.

STO CORP. DISCLAIMS ALL WARRANTIES EXPRESSED OR IMPLIED EXCEPT FOR EXPLICIT LIMITED WRITTEN WARRANTIES ISSUED TO AND ACCEPTED BY BUILDING OWNERS IN ACCORDANCE WITH STO'S WARRANTY PROGRAMS WHICH ARE SUBJECT TO CHANGE FROM TIME TO TIME. For the fullest, most current information on proper application, clean-up, mixing and other specifications and warranties, cautions and disclaimers, please refer to the Sto Corp. website, www.stocorp.com.

StoTherm[®] ci - 1177-LM-150 Aesthetic Feature Band

Detail No.: 10H.14.04
Date: February 2019



- Notes:**
- System Components:**
 - 6", 16 ga. Steel Studs at 16-inches on center.
 - $\frac{5}{8}$ " fiberglass faced ASTM C-1177 sheathing
 - Sto Armor Mat XX Embedded in Sto Primer/Adhesive-B
 - Gold Coat
 - Sto Primer/Adhesive-B
 - Miami-Dade County EPS, 1.0 pcf, Minimum 1-inch Thick
 - Sto Mesh Embedded in Sto Primer/Adhesive-B
 - Sto Finish
 - ASTM C1177 Compliant Sheathing Options:**
 - National Gypsum eXP
 - USG Securock
 - Continental Weather Defense
 - Return Sto Flexyl vertically 4" (102mm) above and below feature band.**
 - Components not identified as Sto are furnished by other manufacturers and are not necessarily installed by trades who install Sto products. Refer to project specific contract documents.

ATTENTION

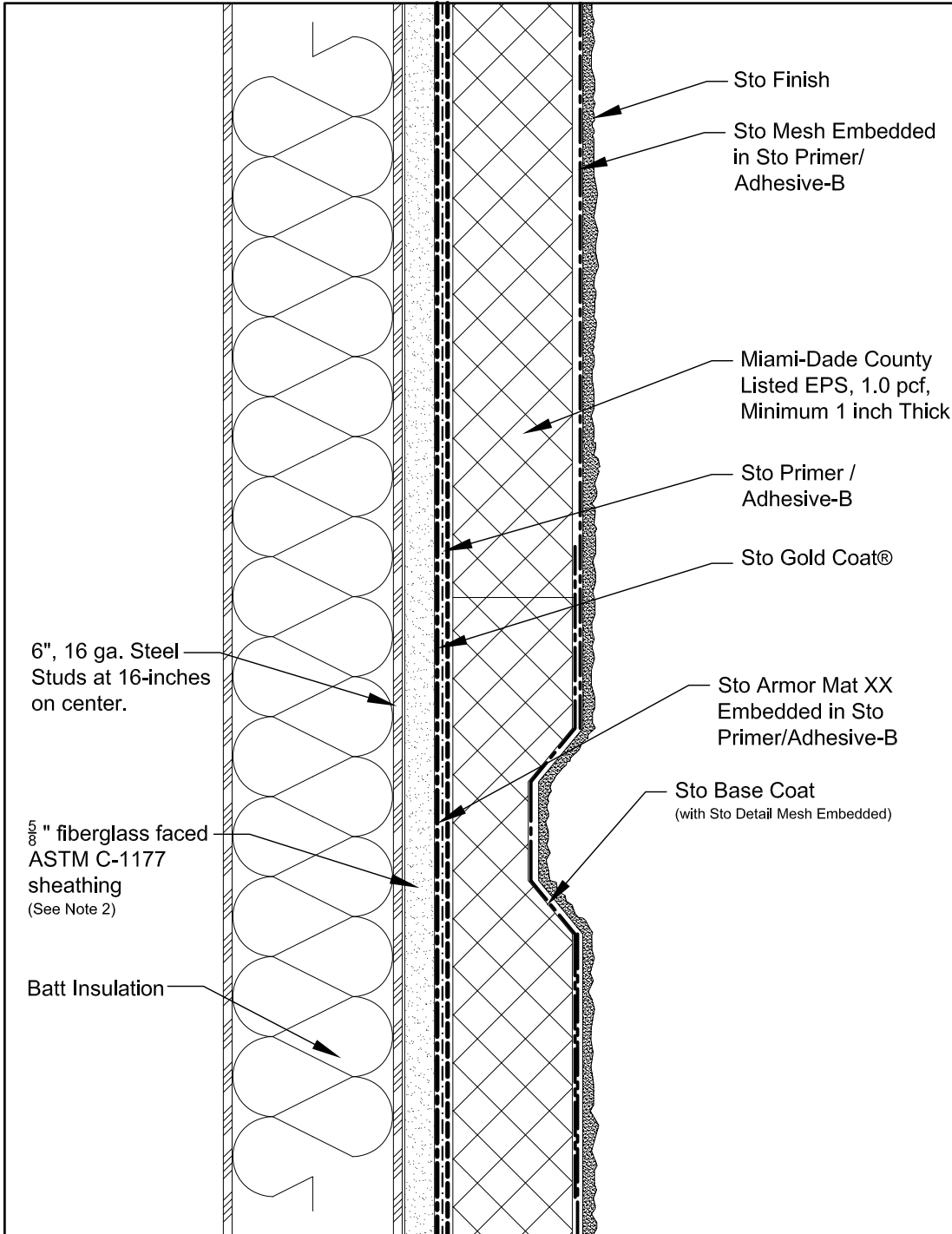
Sto products are intended for use by qualified professional contractors, not consumers, as a component of a larger construction assembly as specified by a qualified design professional, general contractor or builder. They should be installed in accordance with those specifications and Sto's instructions. Sto Corp. disclaims all, and assumes no, liability for on-site inspections, for its products applied improperly, or by unqualified persons or entities, or as part of an improperly designed or constructed building, for the nonperformance of adjacent building components or assemblies, or for other construction activities beyond Sto's control. Improper use of Sto products or use as part of an improperly designed or constructed larger assembly or building may result in serious damage to Sto products, and to the structure of the building or its components.

STO CORP. DISCLAIMS ALL WARRANTIES EXPRESSED OR IMPLIED EXCEPT FOR EXPLICIT LIMITED WRITTEN WARRANTIES ISSUED TO AND ACCEPTED BY BUILDING OWNERS IN ACCORDANCE WITH STO'S WARRANTY PROGRAMS WHICH ARE SUBJECT TO CHANGE FROM TIME TO TIME. For the fullest, most current information on proper application, clean-up, mixing and other specifications and warranties, cautions and disclaimers, please refer to the Sto Corp. website, www.stocorp.com.

StoTherm® ci - 1177-LM-150

Aesthetic Reveal - Option 1

Detail No.: 10H.14.05A
Date: February 2019



Notes:

1. System Components:

- 6", 16 ga. Steel Studs at 16-inches on center.
- $\frac{5}{8}$ " fiberglass faced ASTM C-1177 sheathing
- Sto Armor Mat XX Embedded in Sto Primer/Adhesive-B
- Gold Coat
- Sto Primer/Adhesive-B
- Miami-Dade County EPS, 1.0 pcf, Minimum 1-inch Thick
- Sto Mesh Embedded in Sto Primer/ Adhesive-B
- Sto Finish

2. ASTM C1177 Compliant Sheathing Options:

- National Gypsum eXP
- USG Securock
- Continental Weather Defense

- Components not identified as Sto are furnished by other manufacturers and are not necessarily installed by trades who install Sto products. Refer to project specific contract documents.

ATTENTION

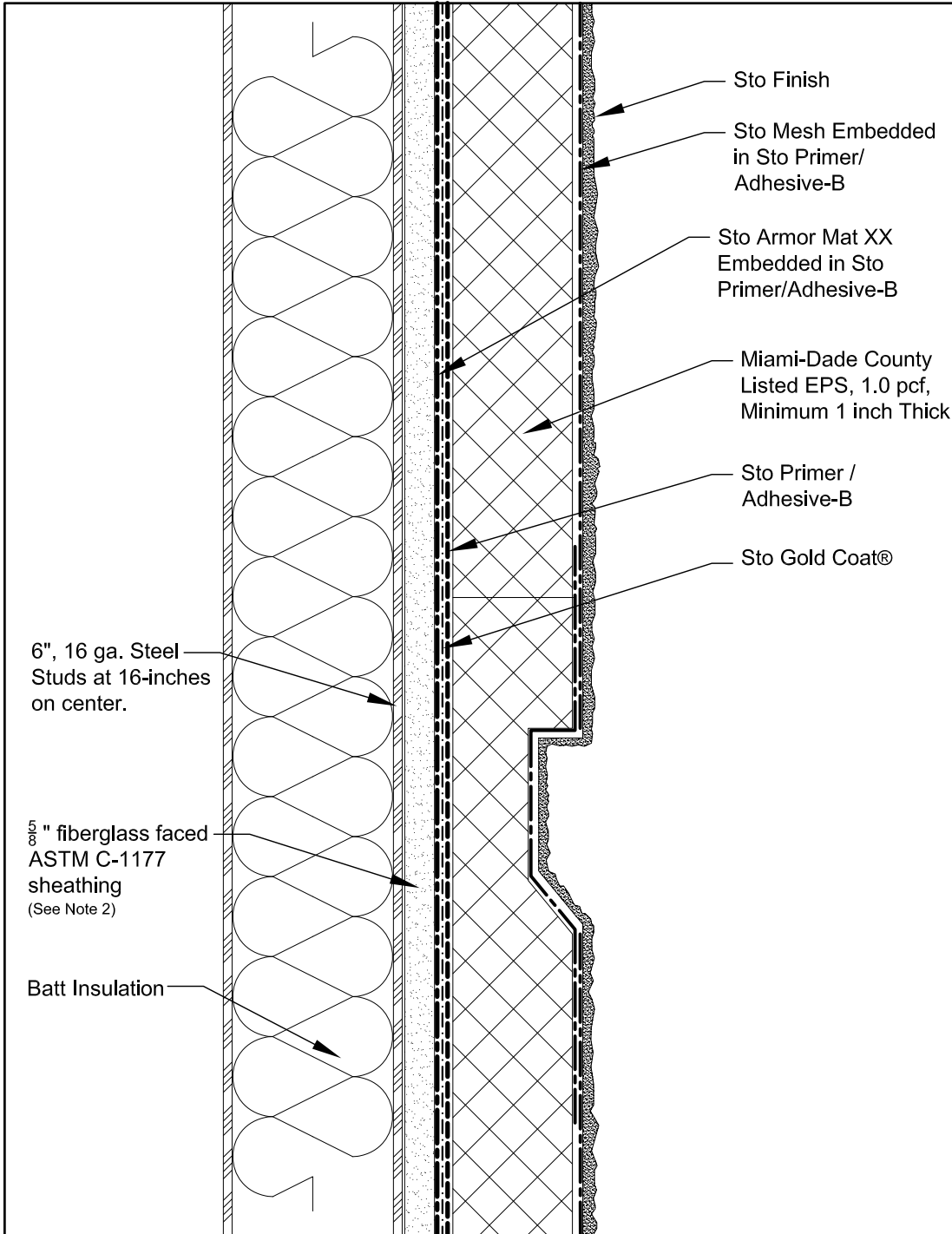
Sto products are intended for use by qualified professional contractors, not consumers, as a component of a larger construction assembly as specified by a qualified design professional, general contractor or builder. They should be installed in accordance with those specifications and Sto's instructions. Sto Corp. disclaims all, and assumes no, liability for on-site inspections, for its products applied improperly, or by unqualified persons or entities, or as part of an improperly designed or constructed building, for the nonperformance of adjacent building components or assemblies, or for other construction activities beyond Sto's control. Improper use of Sto products or use as part of an improperly designed or constructed larger assembly or building may result in serious damage to Sto products, and to the structure of the building or its components.

STO CORP. DISCLAIMS ALL WARRANTIES EXPRESSED OR IMPLIED EXCEPT FOR EXPLICIT LIMITED WRITTEN WARRANTIES ISSUED TO AND ACCEPTED BY BUILDING OWNERS IN ACCORDANCE WITH STO'S WARRANTY PROGRAMS WHICH ARE SUBJECT TO CHANGE FROM TIME TO TIME. For the fullest, most current information on proper application, clean-up, mixing and other specifications and warranties, cautions and disclaimers, please refer to the Sto Corp. website, www.stocorp.com.

StoTherm® ci - 1177-LM-150

Aesthetic Reveal - Option 2

Detail No.: 10H.14.05B
Date: February 2019



Notes:

1. System Components:

- 6", 16 ga. Steel Studs at 16-inches on center.
- $\frac{5}{8}$ " fiberglass faced ASTM C-1177 sheathing
- Sto Armor Mat XX Embedded in Sto Primer/Adhesive-B
- Gold Coat
- Sto Primer/Adhesive-B
- Miami-Dade County EPS, 1.0 pcf, Minimum 1-inch Thick
- Sto Mesh Embedded in Sto Primer/ Adhesive-B
- Sto Finish

2. ASTM C1177 Compliant Sheathing Options:

- National Gypsum eXP
- USG Securock
- Continental Weather Defense

- Components not identified as Sto are furnished by other manufacturers and are not necessarily installed by trades who install Sto products. Refer to project specific contract documents.

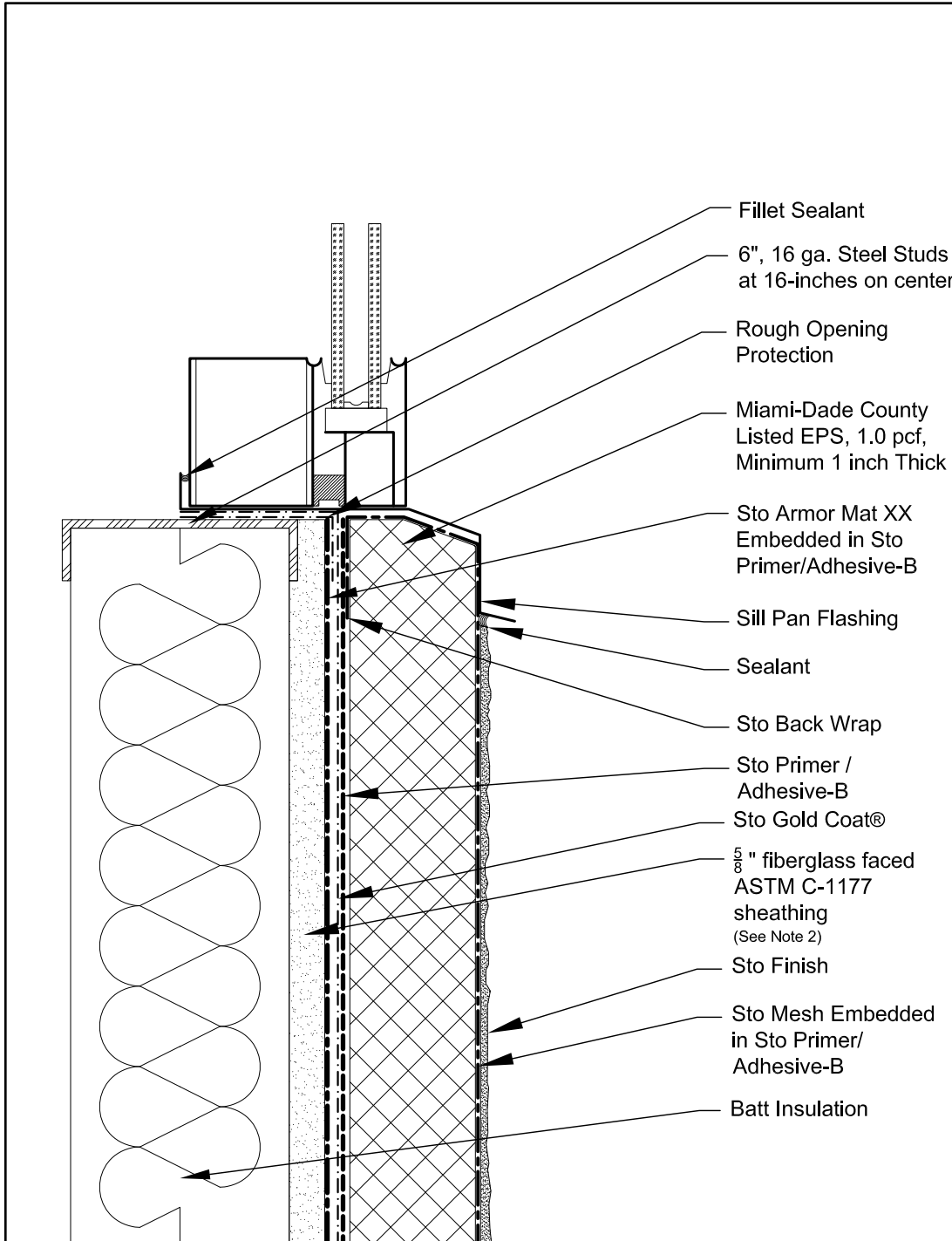
ATTENTION

Sto products are intended for use by qualified professional contractors, not consumers, as a component of a larger construction assembly as specified by a qualified design professional, general contractor or builder. They should be installed in accordance with those specifications and Sto's instructions. Sto Corp. disclaims all, and assumes no, liability for on-site inspections, for its products applied improperly, or by unqualified persons or entities, or as part of an improperly designed or constructed building, for the nonperformance of adjacent building components or assemblies, or for other construction activities beyond Sto's control. Improper use of Sto products or use as part of an improperly designed or constructed larger assembly or building may result in serious damage to Sto products, and to the structure of the building or its components.

STO CORP. DISCLAIMS ALL WARRANTIES EXPRESSED OR IMPLIED EXCEPT FOR EXPLICIT LIMITED WRITTEN WARRANTIES ISSUED TO AND ACCEPTED BY BUILDING OWNERS IN ACCORDANCE WITH STO'S WARRANTY PROGRAMS WHICH ARE SUBJECT TO CHANGE FROM TIME TO TIME. For the fullest, most current information on proper application, clean-up, mixing and other specifications and warranties, cautions and disclaimers, please refer to the Sto Corp. website, www.stocorp.com.

StoTherm[®]ci - 1177-LM-150
Window Sill / Receptor Style

Detail No.: 10H.14.23A
Date: February 2019



Notes:

1. System Components:

- 6", 16 ga. Steel Studs at 16-inches on center.
- $\frac{5}{8}$ " fiberglass faced ASTM C-1177 sheathing
- Sto Armor Mat XX Embedded in Sto Primer/Adhesive-B
- Gold Coat
- Sto Primer/Adhesive-B
- Miami-Dade County EPS, 1.0 pcf, Minimum 1-inch Thick
- Sto Mesh Embedded in Sto Primer/Adhesive-B
- Sto Finish

2. ASTM C1177 Compliant Sheathing Options:

- National Gypsum eXP
- USG Securock
- Continental Weather Defense

- Components not identified as Sto are furnished by other manufacturers and are not necessarily installed by trades who install Sto products. Refer to project specific contract documents.

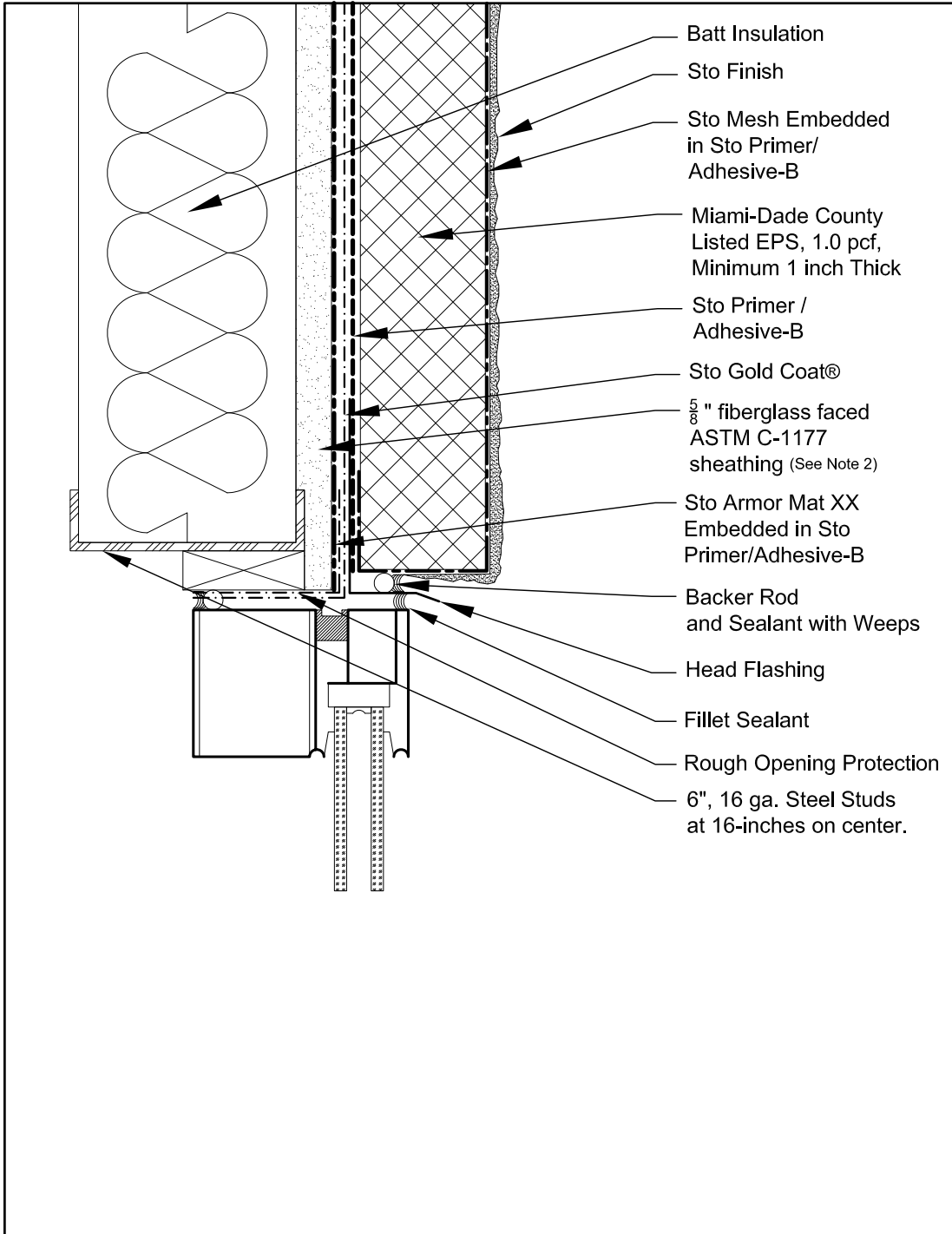
ATTENTION

Sto products are intended for use by qualified professional contractors, not consumers, as a component of a larger construction assembly as specified by a qualified design professional, general contractor or builder. They should be installed in accordance with those specifications and Sto's instructions. Sto Corp. disclaims all, and assumes no, liability for on-site inspections, for its products applied improperly, or by unqualified persons or entities, or as part of an improperly designed or constructed building, for the nonperformance of adjacent building components or assemblies, or for other construction activities beyond Sto's control. Improper use of Sto products or use as part of an improperly designed or constructed larger assembly or building may result in serious damage to Sto products, and to the structure of the building or its components.

STO CORP. DISCLAIMS ALL WARRANTIES EXPRESSED OR IMPLIED EXCEPT FOR EXPLICIT LIMITED WRITTEN WARRANTIES ISSUED TO AND ACCEPTED BY BUILDING OWNERS IN ACCORDANCE WITH STO'S WARRANTY PROGRAMS WHICH ARE SUBJECT TO CHANGE FROM TIME TO TIME. For the fullest, most current information on proper application, clean-up, mixing and other specifications and warranties, cautions and disclaimers, please refer to the Sto Corp. website, www.stocorp.com.

StoTherm[®]ci - 1177-LM-150
Window Head / Receptor Style

Detail No.: 10H.14.23B
Date: February 2019



Notes:

1. System Components:

- 6", 16 ga. Steel Studs at 16-inches on center.
- $\frac{5}{8}$ " fiberglass faced ASTM C-1177 sheathing
- Sto Armor Mat XX Embedded in Sto Primer/Adhesive-B
- Gold Coat
- Sto Primer/Adhesive-B
- Miami-Dade County EPS, 1.0 pcf, Minimum 1-inch Thick
- Sto Mesh Embedded in Sto Primer/Adhesive-B
- Sto Finish

2. ASTM C1177 Compliant Sheathing Options:

- National Gypsum eXP
- USG Securock
- Continental Weather Defense

- Components not identified as Sto are furnished by other manufacturers and are not necessarily installed by trades who install Sto products. Refer to project specific contract documents.

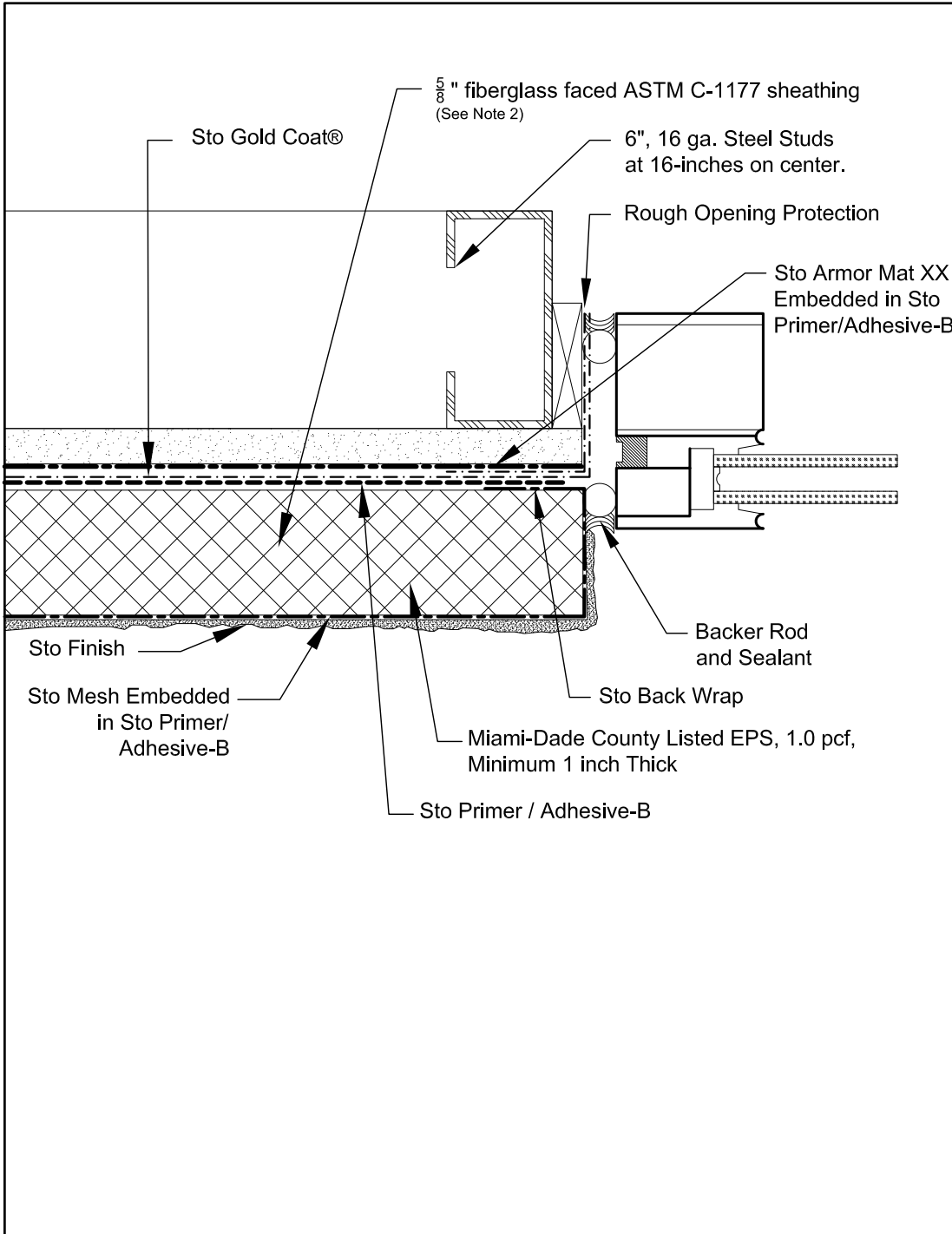
ATTENTION

Sto products are intended for use by qualified professional contractors, not consumers, as a component of a larger construction assembly as specified by a qualified design professional, general contractor or builder. They should be installed in accordance with those specifications and Sto's instructions. Sto Corp. disclaims all, and assumes no, liability for on-site inspections, for its products applied improperly, or by unqualified persons or entities, or as part of an improperly designed or constructed building, for the nonperformance of adjacent building components or assemblies, or for other construction activities beyond Sto's control. Improper use of Sto products or use as part of an improperly designed or constructed larger assembly or building may result in serious damage to Sto products, and to the structure of the building or its components.

STO CORP. DISCLAIMS ALL WARRANTIES EXPRESSED OR IMPLIED EXCEPT FOR EXPLICIT LIMITED WRITTEN WARRANTIES ISSUED TO AND ACCEPTED BY BUILDING OWNERS IN ACCORDANCE WITH STO'S WARRANTY PROGRAMS WHICH ARE SUBJECT TO CHANGE FROM TIME TO TIME. For the fullest, most current information on proper application, clean-up, mixing and other specifications and warranties, cautions and disclaimers, please refer to the Sto Corp. website, www.stocorp.com.

StoTherm[®]ci - 1177-LM-150 Window Jamb / Receptor Style

Detail No.: 10H.14.23C
Date: February 2019



- Notes:**
- System Components:**
 - 6", 16 ga. Steel Studs at 16-inches on center.
 - $\frac{5}{8}$ " fiberglass faced ASTM C-1177 sheathing
 - Sto Armor Mat XX Embedded in Sto Primer/Adhesive-B
 - Gold Coat
 - Sto Primer/Adhesive-B
 - Miami-Dade County EPS, 1.0 pcf, Minimum 1-inch Thick
 - Sto Mesh Embedded in Sto Primer/Adhesive-B
 - Sto Finish
 - ASTM C1177 Compliant Sheathing Options:**
 - National Gypsum eXP
 - USG Securock
 - Continental Weather Defense
- Components not identified as Sto are furnished by other manufacturers and are not necessarily installed by trades who install Sto products. Refer to project specific contract documents.

ATTENTION

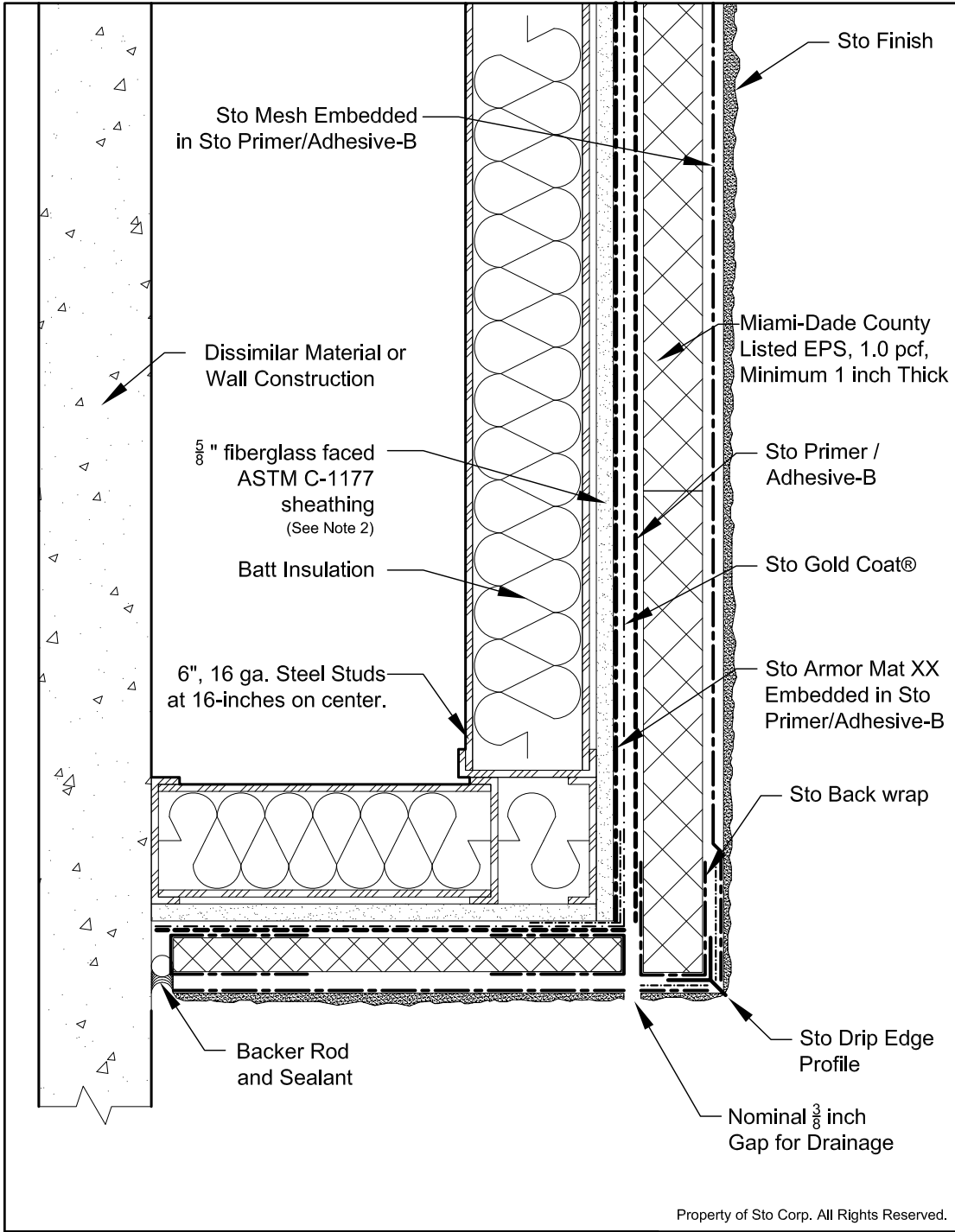
Sto products are intended for use by qualified professional contractors, not consumers, as a component of a larger construction assembly as specified by a qualified design professional, general contractor or builder. They should be installed in accordance with those specifications and Sto's instructions. Sto Corp. disclaims all, and assumes no, liability for on-site inspections, for its products applied improperly, or by unqualified persons or entities, or as part of an improperly designed or constructed building, for the nonperformance of adjacent building components or assemblies, or for other construction activities beyond Sto's control. Improper use of Sto products or use as part of an improperly designed or constructed larger assembly or building may result in serious damage to Sto products, and to the structure of the building or its components.

STO CORP. DISCLAIMS ALL WARRANTIES EXPRESSED OR IMPLIED EXCEPT FOR EXPLICIT LIMITED WRITTEN WARRANTIES ISSUED TO AND ACCEPTED BY BUILDING OWNERS IN ACCORDANCE WITH STO'S WARRANTY PROGRAMS WHICH ARE SUBJECT TO CHANGE FROM TIME TO TIME. For the fullest, most current information on proper application, clean-up, mixing and other specifications and warranties, cautions and disclaimers, please refer to the Sto Corp. website, www.stocorp.com.

StoTherm[®] ci - 1177-LM-150

Soffit: Insulated and Unvented

Detail No.: 10H.14.30
Date: February 2019



Notes:

1. System Components:

- 6", 16 ga. Steel Studs at 16-inches on center.
- 5/8" fiberglass faced ASTM C-1177 sheathing
- Sto Armor Mat XX Embedded in Sto Primer/Adhesive-B
- Gold Coat
- Sto Primer/Adhesive-B
- Miami-Dade County EPS, 1.0 pcf, Minimum 1-inch Thick
- Sto Mesh Embedded in Sto Primer/Adhesive-B
- Sto Finish

2. ASTM C1177 Compliant Sheathing Options:

- National Gypsum eXP
- USG Securock
- Continental Weather Defense

- Components not identified as Sto are furnished by other manufacturers and are not necessarily installed by trades who install Sto products. Refer to project specific contract documents.

ATTENTION

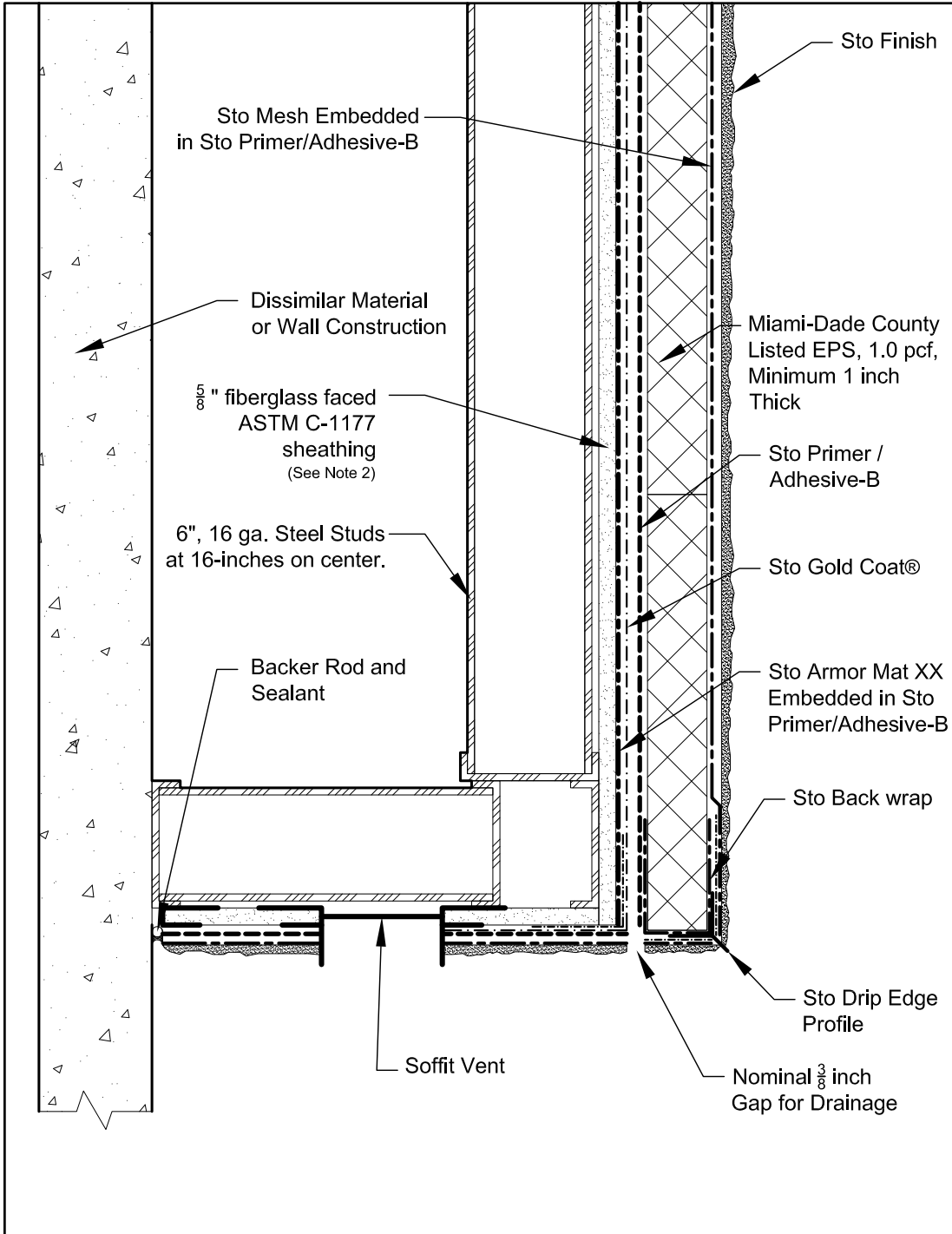
Sto products are intended for use by qualified professional contractors, not consumers, as a component of a larger construction assembly as specified by a qualified design professional, general contractor or builder. They should be installed in accordance with those specifications and Sto's instructions. Sto Corp. disclaims all, and assumes no, liability for on-site inspections, for its products applied improperly, or by unqualified persons or entities, or as part of an improperly designed or constructed building, for the nonperformance of adjacent building components or assemblies, or for other construction activities beyond Sto's control. Improper use of Sto products or use as part of an improperly designed or constructed larger assembly or building may result in serious damage to Sto products, and to the structure of the building or its components.

STO CORP. DISCLAIMS ALL WARRANTIES EXPRESSED OR IMPLIED EXCEPT FOR EXPLICIT LIMITED WRITTEN WARRANTIES ISSUED TO AND ACCEPTED BY BUILDING OWNERS IN ACCORDANCE WITH STO'S WARRANTY PROGRAMS WHICH ARE SUBJECT TO CHANGE FROM TIME TO TIME. For the fullest, most current information on proper application, clean-up, mixing and other specifications and warranties, cautions and disclaimers, please refer to the Sto Corp. website, www.stocorp.com.

StoTherm® ci - 1177-LM-150

Soffit: Uninsulated and Vented

Detail No.: 10H.14.31
Date: February 2019



Notes:

1. System Components:

- 6", 16 ga. Steel Studs at 16-inches on center.
- $\frac{5}{8}$ " fiberglass faced ASTM C-1177 sheathing
- Sto Armor Mat XX Embedded in Sto Primer/Adhesive-B
- Gold Coat
- Sto Primer/Adhesive-B
- Miami-Dade County EPS, 1.0 pcf, Minimum 1-inch Thick
- Sto Mesh Embedded in Sto Primer/Adhesive-B
- Sto Finish

2. ASTM C1177 Compliant Sheathing Options:

- National Gypsum eXP
- USG Securock
- Continental Weather Defense

- Components not identified as Sto are furnished by other manufacturers and are not necessarily installed by trades who install Sto products. Refer to project specific contract documents.

ATTENTION

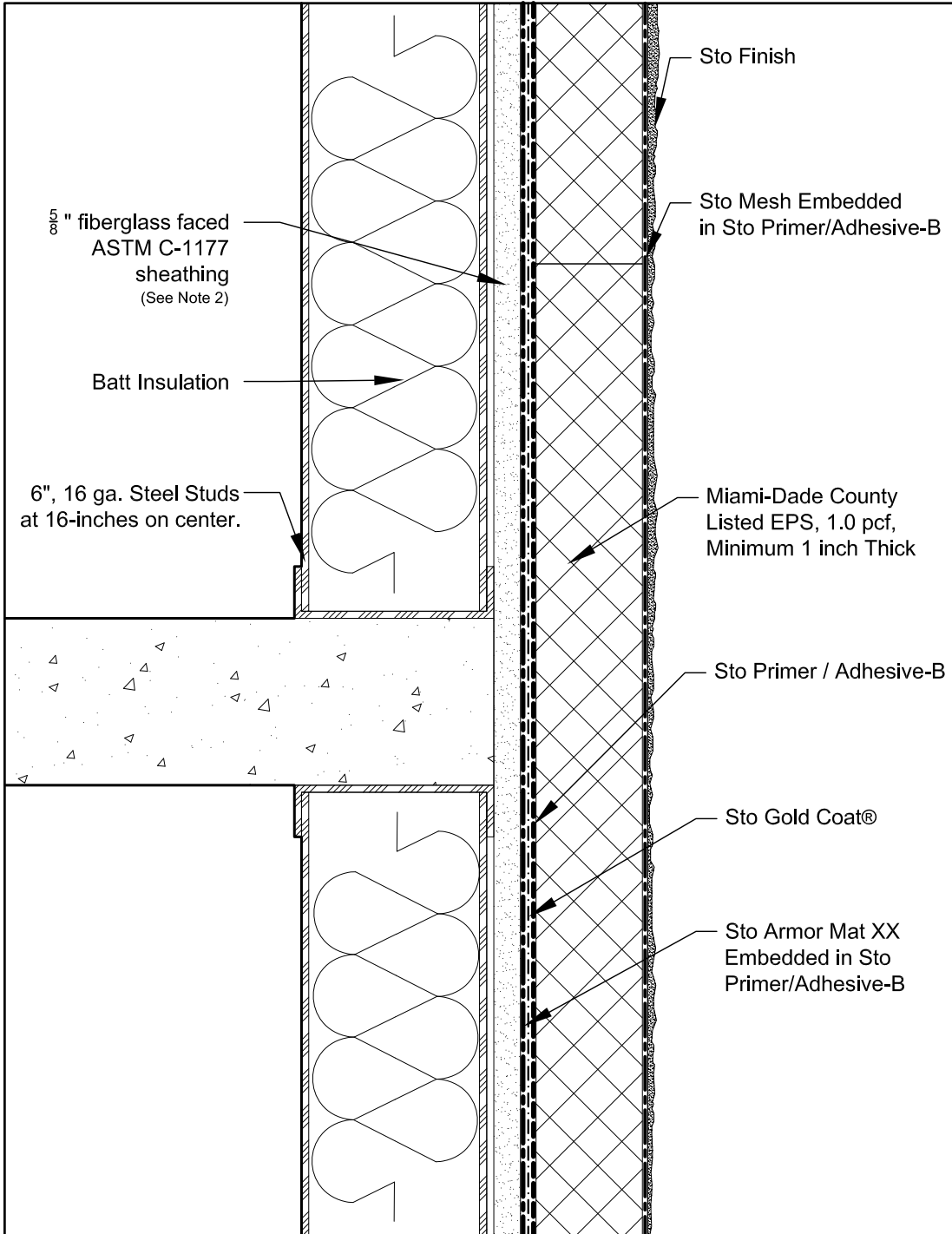
Sto products are intended for use by qualified professional contractors, not consumers, as a component of a larger construction assembly as specified by a qualified design professional, general contractor or builder. They should be installed in accordance with those specifications and Sto's instructions. Sto Corp. disclaims all, and assumes no, liability for on-site inspections, for its products applied improperly, or by unqualified persons or entities, or as part of an improperly designed or constructed building, for the nonperformance of adjacent building components or assemblies, or for other construction activities beyond Sto's control. Improper use of Sto products or use as part of an improperly designed or constructed larger assembly or building may result in serious damage to Sto products, and to the structure of the building or its components.

STO CORP. DISCLAIMS ALL WARRANTIES EXPRESSED OR IMPLIED EXCEPT FOR EXPLICIT LIMITED WRITTEN WARRANTIES ISSUED TO AND ACCEPTED BY BUILDING OWNERS IN ACCORDANCE WITH STO'S WARRANTY PROGRAMS WHICH ARE SUBJECT TO CHANGE FROM TIME TO TIME. For the fullest, most current information on proper application, clean-up, mixing and other specifications and warranties, cautions and disclaimers, please refer to the Sto Corp. website, www.stocorp.com.

StoTherm[®]ci - 1177-LM-150

Floor Line Without Deflection

Detail No.: 10H.14.40
Date: February 2019



Notes:

1. System Components:

- 6", 16 ga. Steel Studs at 16-inches on center.
- $\frac{5}{8}$ " fiberglass faced ASTM C-1177 sheathing
- Sto Armor Mat XX Embedded in Sto Primer/Adhesive-B
- Gold Coat
- Sto Primer/Adhesive-B
- Miami-Dade County EPS, 1.0 pcf, Minimum 1-inch Thick
- Sto Mesh Embedded in Sto Primer/Adhesive-B
- Sto Finish

2. ASTM C1177 Compliant Sheathing Options:

- National Gypsum eXP
- USG Securock
- Continental Weather Defense

- Components not identified as Sto are furnished by other manufacturers and are not necessarily installed by trades who install Sto products. Refer to project specific contract documents.

ATTENTION

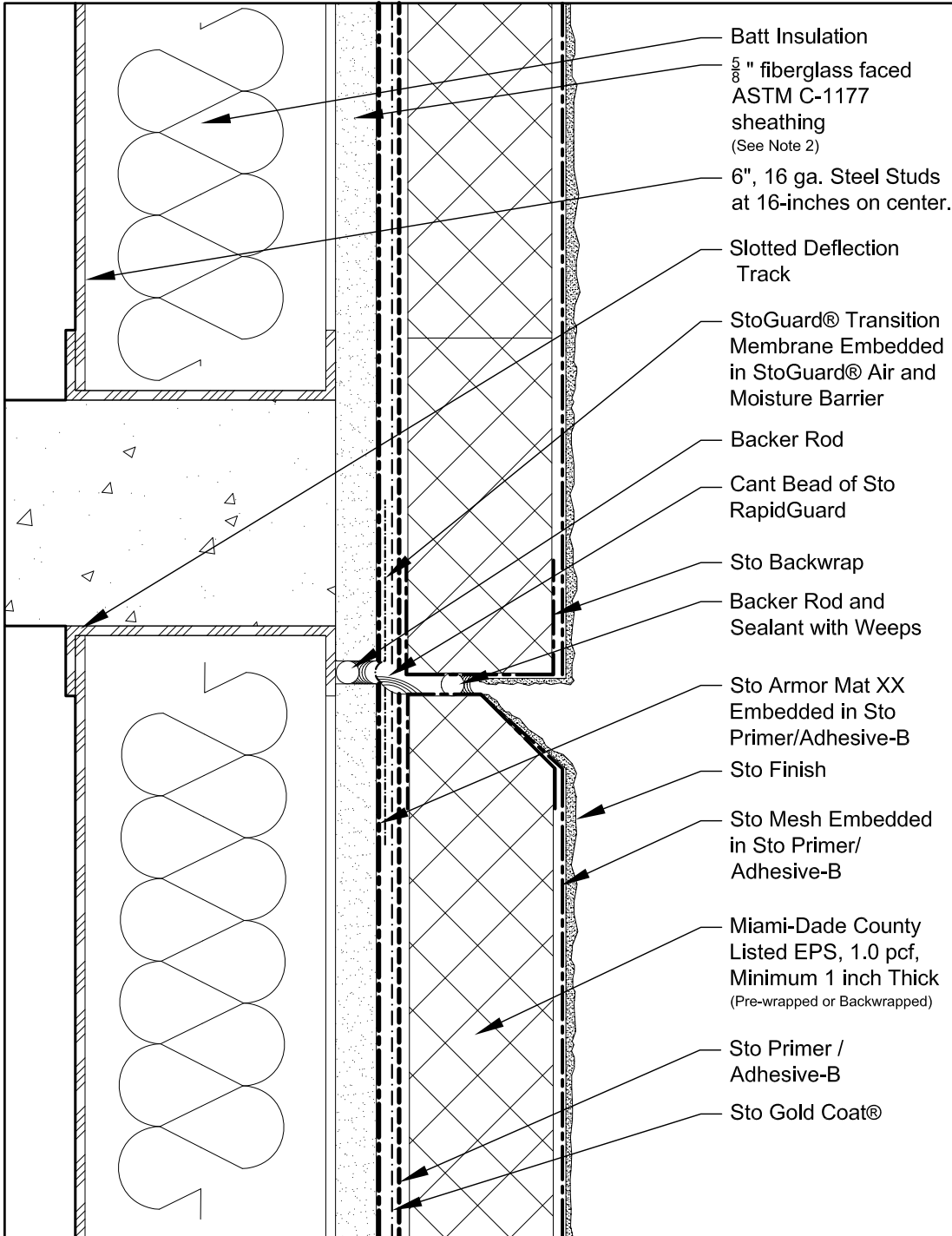
Sto products are intended for use by qualified professional contractors, not consumers, as a component of a larger construction assembly as specified by a qualified design professional, general contractor or builder. They should be installed in accordance with those specifications and Sto's instructions. Sto Corp. disclaims all, and assumes no, liability for on-site inspections, for its products applied improperly, or by unqualified persons or entities, or as part of an improperly designed or constructed building, for the nonperformance of adjacent building components or assemblies, or for other construction activities beyond Sto's control. Improper use of Sto products or use as part of an improperly designed or constructed larger assembly or building may result in serious damage to Sto products, and to the structure of the building or its components.

STO CORP. DISCLAIMS ALL WARRANTIES EXPRESSED OR IMPLIED EXCEPT FOR EXPLICIT LIMITED WRITTEN WARRANTIES ISSUED TO AND ACCEPTED BY BUILDING OWNERS IN ACCORDANCE WITH STO'S WARRANTY PROGRAMS WHICH ARE SUBJECT TO CHANGE FROM TIME TO TIME. For the fullest, most current information on proper application, clean-up, mixing and other specifications and warranties, cautions and disclaimers, please refer to the Sto Corp. website, www.stocorp.com.

StoTherm®ci - 1177-LM-150

Floor Line With Deflection - Drainage at Floor Line

Detail No.: 10H.14.41A
Date: February 2019



- Notes:**
- System Components:**
 - 6", 16 ga. Steel Studs at 16-inches on center.
 - $\frac{5}{8}$ " fiberglass faced ASTM C-1177 sheathing
 - Sto Armor Mat XX Embedded in Sto Primer/Adhesive-B
 - Gold Coat
 - Sto Primer/Adhesive-B
 - Miami-Dade County EPS, 1.0 pcf, Minimum 1-inch Thick
 - Sto Mesh Embedded in Sto Primer/Adhesive-B
 - Sto Finish
 - ASTM C1177 Compliant Sheathing Options:**
 - National Gypsum eXP
 - USG Securock
 - Continental Weather Defense
- Components not identified as Sto are furnished by other manufacturers and are not necessarily installed by trades who install Sto products. Refer to project specific contract documents.

ATTENTION

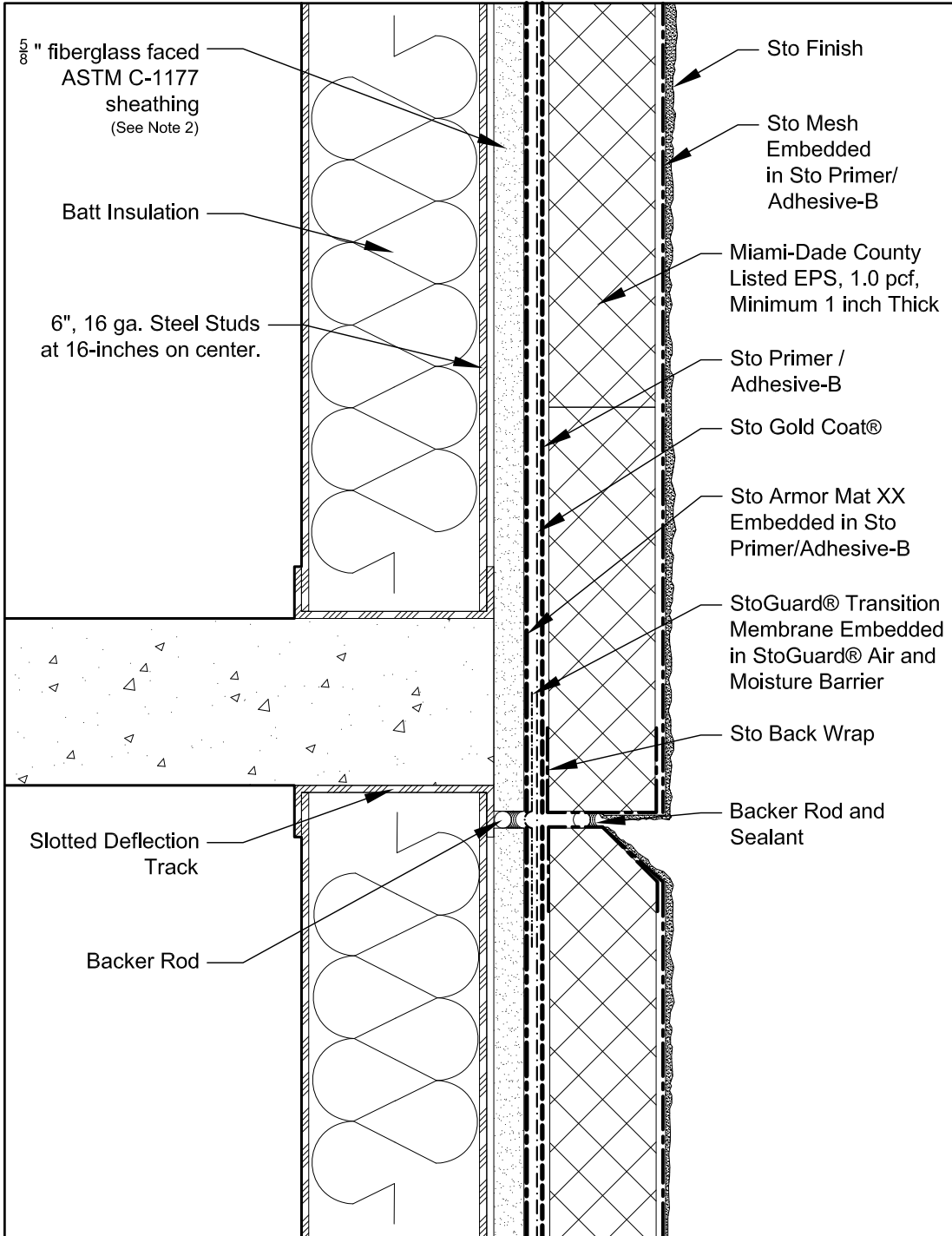
Sto products are intended for use by qualified professional contractors, not consumers, as a component of a larger construction assembly as specified by a qualified design professional, general contractor or builder. They should be installed in accordance with those specifications and Sto's instructions. Sto Corp. disclaims all, and assumes no, liability for on-site inspections, for its products applied improperly, or by unqualified persons or entities, or as part of an improperly designed or constructed building, for the nonperformance of adjacent building components or assemblies, or for other construction activities beyond Sto's control. Improper use of Sto products or use as part of an improperly designed or constructed larger assembly or building may result in serious damage to Sto products, and to the structure of the building or its components.

STO CORP. DISCLAIMS ALL WARRANTIES EXPRESSED OR IMPLIED EXCEPT FOR EXPLICIT LIMITED WRITTEN WARRANTIES ISSUED TO AND ACCEPTED BY BUILDING OWNERS IN ACCORDANCE WITH STO'S WARRANTY PROGRAMS WHICH ARE SUBJECT TO CHANGE FROM TIME TO TIME. For the fullest, most current information on proper application, clean-up, mixing and other specifications and warranties, cautions and disclaimers, please refer to the Sto Corp. website, www.stocorp.com.

StoTherm® ci - 1177-LM-150

Floor Line With Deflection - No Drainage at Floor Line

Detail No.: 10H.14.41B
Date: February 2019



Notes:

1. System Components:

- 6", 16 ga. Steel Studs at 16-inches on center.
- $\frac{5}{8}$ " fiberglass faced ASTM C-1177 sheathing
- Sto Armor Mat XX Embedded in Sto Primer/Adhesive-B
- Gold Coat
- Sto Primer/Adhesive-B
- Miami-Dade County EPS, 1.0 pcf, Minimum 1-inch Thick
- Sto Mesh Embedded in Sto Primer/Adhesive-B
- Sto Finish

2. ASTM C1177 Compliant Sheathing Options:

- National Gypsum eXP
- USG Securock
- Continental Weather Defense

- Components not identified as Sto are furnished by other manufacturers and are not necessarily installed by trades who install Sto products. Refer to project specific contract documents.

ATTENTION

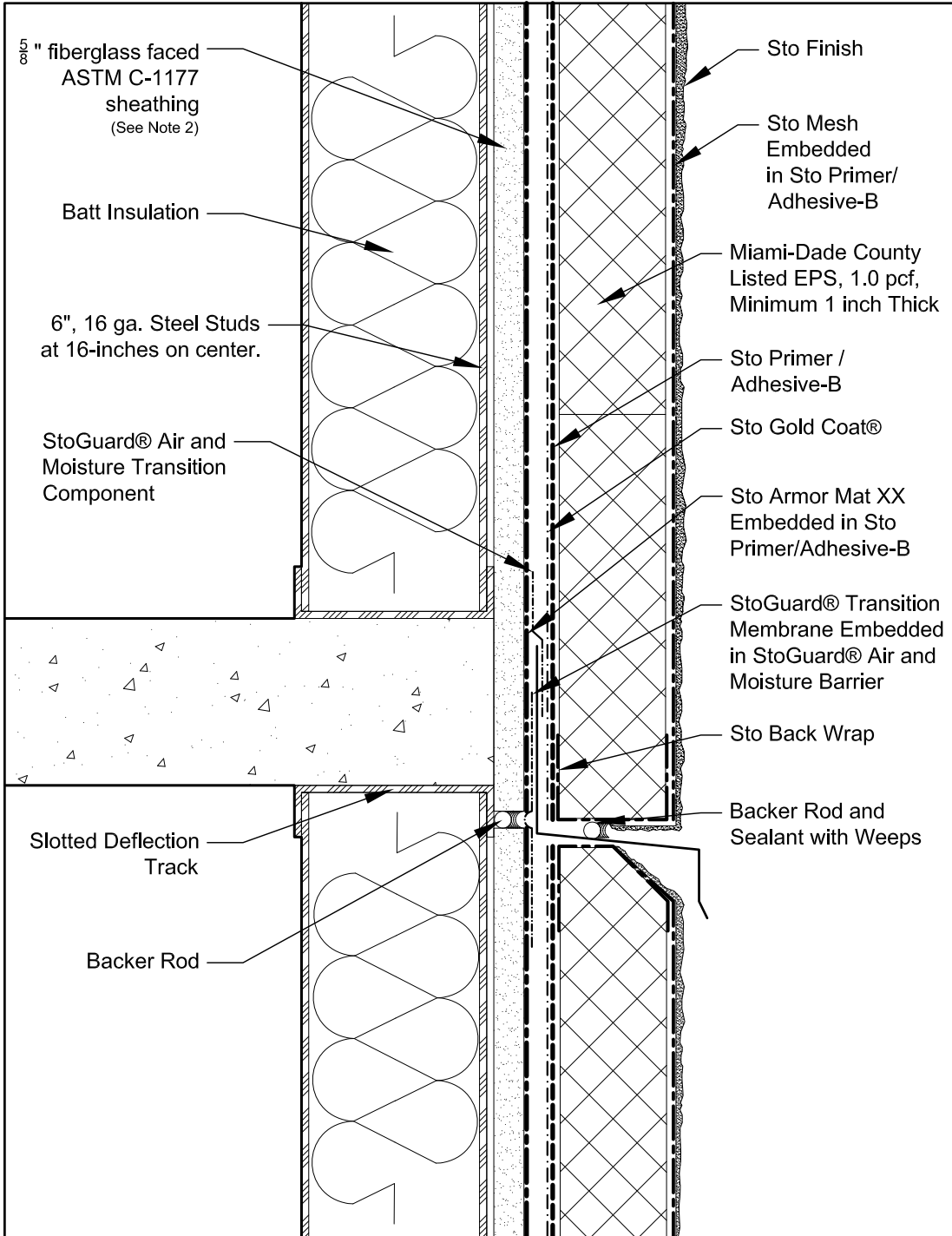
Sto products are intended for use by qualified professional contractors, not consumers, as a component of a larger construction assembly as specified by a qualified design professional, general contractor or builder. They should be installed in accordance with those specifications and Sto's instructions. Sto Corp. disclaims all, and assumes no, liability for on-site inspections, for its products applied improperly, or by unqualified persons or entities, or as part of an improperly designed or constructed building, for the nonperformance of adjacent building components or assemblies, or for other construction activities beyond Sto's control. Improper use of Sto products or use as part of an improperly designed or constructed larger assembly or building may result in serious damage to Sto products, and to the structure of the building or its components.

STO CORP. DISCLAIMS ALL WARRANTIES EXPRESSED OR IMPLIED EXCEPT FOR EXPLICIT LIMITED WRITTEN WARRANTIES ISSUED TO AND ACCEPTED BY BUILDING OWNERS IN ACCORDANCE WITH STO'S WARRANTY PROGRAMS WHICH ARE SUBJECT TO CHANGE FROM TIME TO TIME. For the fullest, most current information on proper application, clean-up, mixing and other specifications and warranties, cautions and disclaimers, please refer to the Sto Corp. website, www.stocorp.com.

StoTherm® ci - 1177-LM-150

Floor Line With Deflection - Flashing and Drainage at Floor Line

Detail No.: 10H.14.41C
Date: February 2019



Notes:

1. System Components:

- 6", 16 ga. Steel Studs at 16-inches on center.
- $\frac{5}{8}$ " fiberglass faced ASTM C-1177 sheathing
- Sto Armor Mat XX Embedded in Sto Primer/Adhesive-B
- Gold Coat
- Sto Primer/Adhesive-B
- Miami-Dade County EPS, 1.0 pcf, Minimum 1-inch Thick
- Sto Mesh Embedded in Sto Primer/Adhesive-B
- Sto Finish

2. ASTM C1177 Compliant Sheathing Options:

- National Gypsum eXP
- USG Securock
- Continental Weather Defense

- Components not identified as Sto are furnished by other manufacturers and are not necessarily installed by trades who install Sto products. Refer to project specific contract documents.

ATTENTION

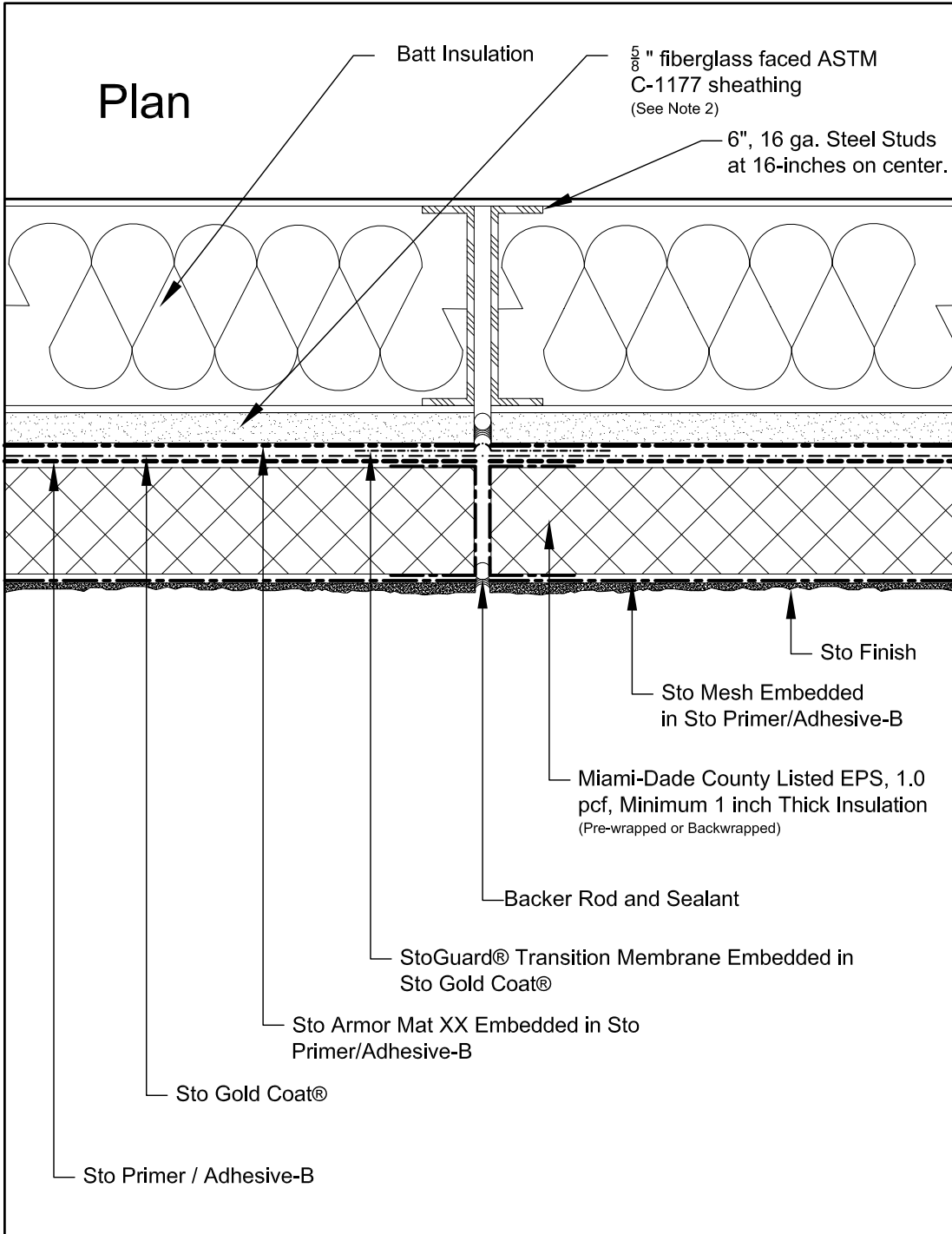
Sto products are intended for use by qualified professional contractors, not consumers, as a component of a larger construction assembly as specified by a qualified design professional, general contractor or builder. They should be installed in accordance with those specifications and Sto's instructions. Sto Corp. disclaims all, and assumes no, liability for on-site inspections, for its products applied improperly, or by unqualified persons or entities, or as part of an improperly designed or constructed building, for the nonperformance of adjacent building components or assemblies, or for other construction activities beyond Sto's control. Improper use of Sto products or use as part of an improperly designed or constructed larger assembly or building may result in serious damage to Sto products, and to the structure of the building or its components.

STO CORP. DISCLAIMS ALL WARRANTIES EXPRESSED OR IMPLIED EXCEPT FOR EXPLICIT LIMITED WRITTEN WARRANTIES ISSUED TO AND ACCEPTED BY BUILDING OWNERS IN ACCORDANCE WITH STO'S WARRANTY PROGRAMS WHICH ARE SUBJECT TO CHANGE FROM TIME TO TIME. For the fullest, most current information on proper application, clean-up, mixing and other specifications and warranties, cautions and disclaimers, please refer to the Sto Corp. website, www.stocorp.com.

StoTherm® ci - 1177-LM-150

Vertical Expansion Joint in Back-Up Wall

Detail No.: 10H.14.52A
Date: February 2019



Notes:

1. System Components:

- 6", 16 ga. Steel Studs at 16-inches on center.
- $\frac{5}{8}$ " fiberglass faced ASTM C-1177 sheathing
- Sto Armor Mat XX Embedded in Sto Primer/Adhesive-B
- Gold Coat
- Sto Primer/Adhesive-B
- Miami-Dade County EPS, 1.0 pcf, Minimum 1-inch Thick
- Sto Mesh Embedded in Sto Primer/Adhesive-B
- Sto Finish

2. ASTM C1177 Compliant Sheathing Options:

- National Gypsum eXP
- USG Securock
- Continental Weather Defense

- Components not identified as Sto are furnished by other manufacturers and are not necessarily installed by trades who install Sto products. Refer to project specific contract documents.

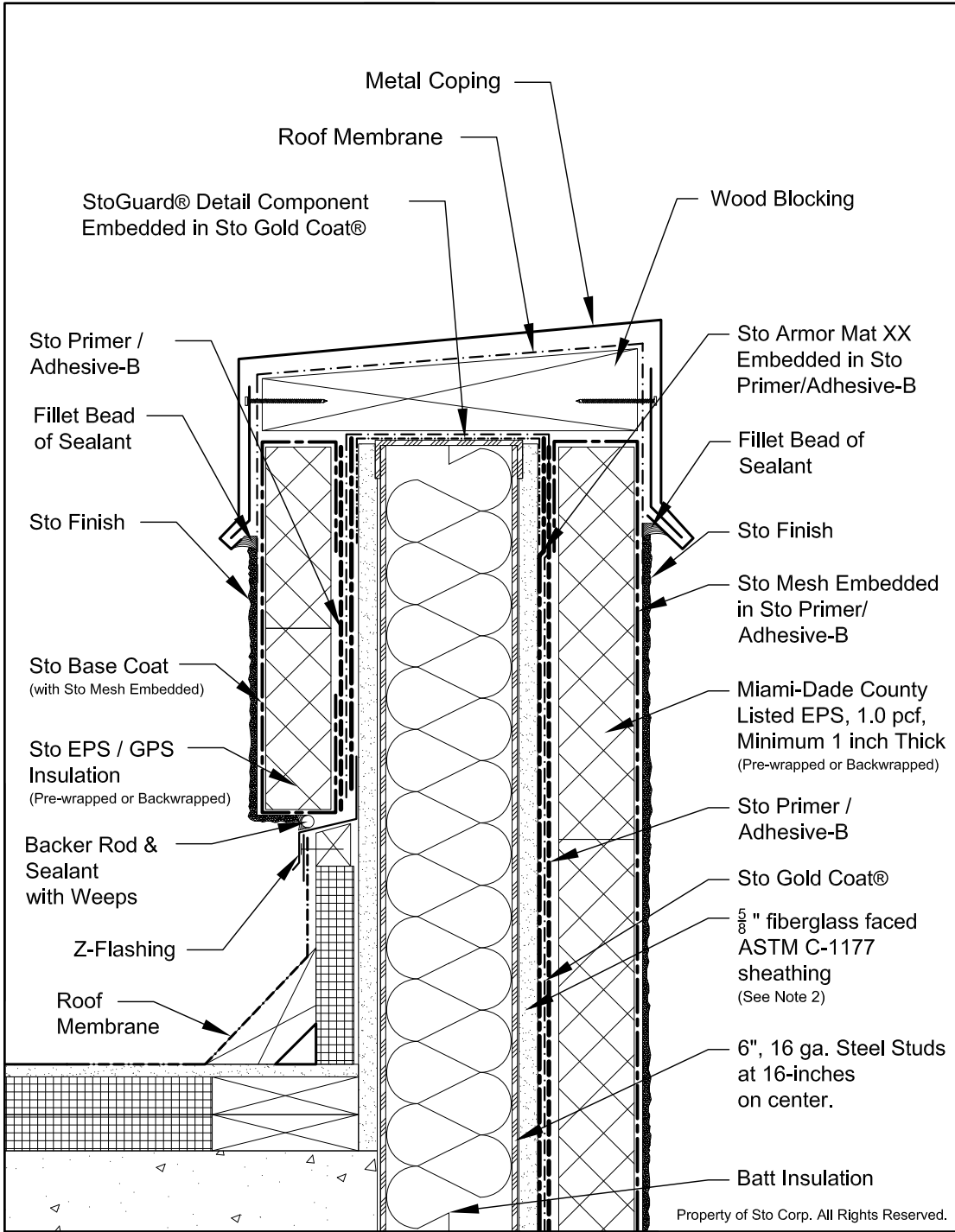
ATTENTION

Sto products are intended for use by qualified professional contractors, not consumers, as a component of a larger construction assembly as specified by a qualified design professional, general contractor or builder. They should be installed in accordance with those specifications and Sto's instructions. Sto Corp. disclaims all, and assumes no, liability for on-site inspections, for its products applied improperly, or by unqualified persons or entities, or as part of an improperly designed or constructed building, for the nonperformance of adjacent building components or assemblies, or for other construction activities beyond Sto's control. Improper use of Sto products or use as part of an improperly designed or constructed larger assembly or building may result in serious damage to Sto products, and to the structure of the building or its components.

STO CORP. DISCLAIMS ALL WARRANTIES EXPRESSED OR IMPLIED EXCEPT FOR EXPLICIT LIMITED WRITTEN WARRANTIES ISSUED TO AND ACCEPTED BY BUILDING OWNERS IN ACCORDANCE WITH STO'S WARRANTY PROGRAMS WHICH ARE SUBJECT TO CHANGE FROM TIME TO TIME. For the fullest, most current information on proper application, clean-up, mixing and other specifications and warranties, cautions and disclaimers, please refer to the Sto Corp. website, www.stocorp.com.

StoTherm[®] ci - 1177-LM-150 Termination at Parapet

Detail No.: 10H.14.60
Date: February 2019



Notes:

1. System Components:

- 6", 16 ga. Steel Studs at 16-inches on center.
- $\frac{5}{8}$ " fiberglass faced ASTM C-1177 sheathing
- Sto Armor Mat XX Embedded in Sto Primer/Adhesive-B
- Gold Coat
- Sto Primer/Adhesive-B
- Miami-Dade County EPS, 1.0 pcf, Minimum 1-inch Thick
- Sto Mesh Embedded in Sto Primer/Adhesive-B
- Sto Finish

2. ASTM C1177 Compliant Sheathing Options:

- National Gypsum eXP
- USG Securock
- Continental Weather Defense

- Components not identified as Sto are furnished by other manufacturers and are not necessarily installed by trades who install Sto products. Refer to project specific contract documents.

ATTENTION

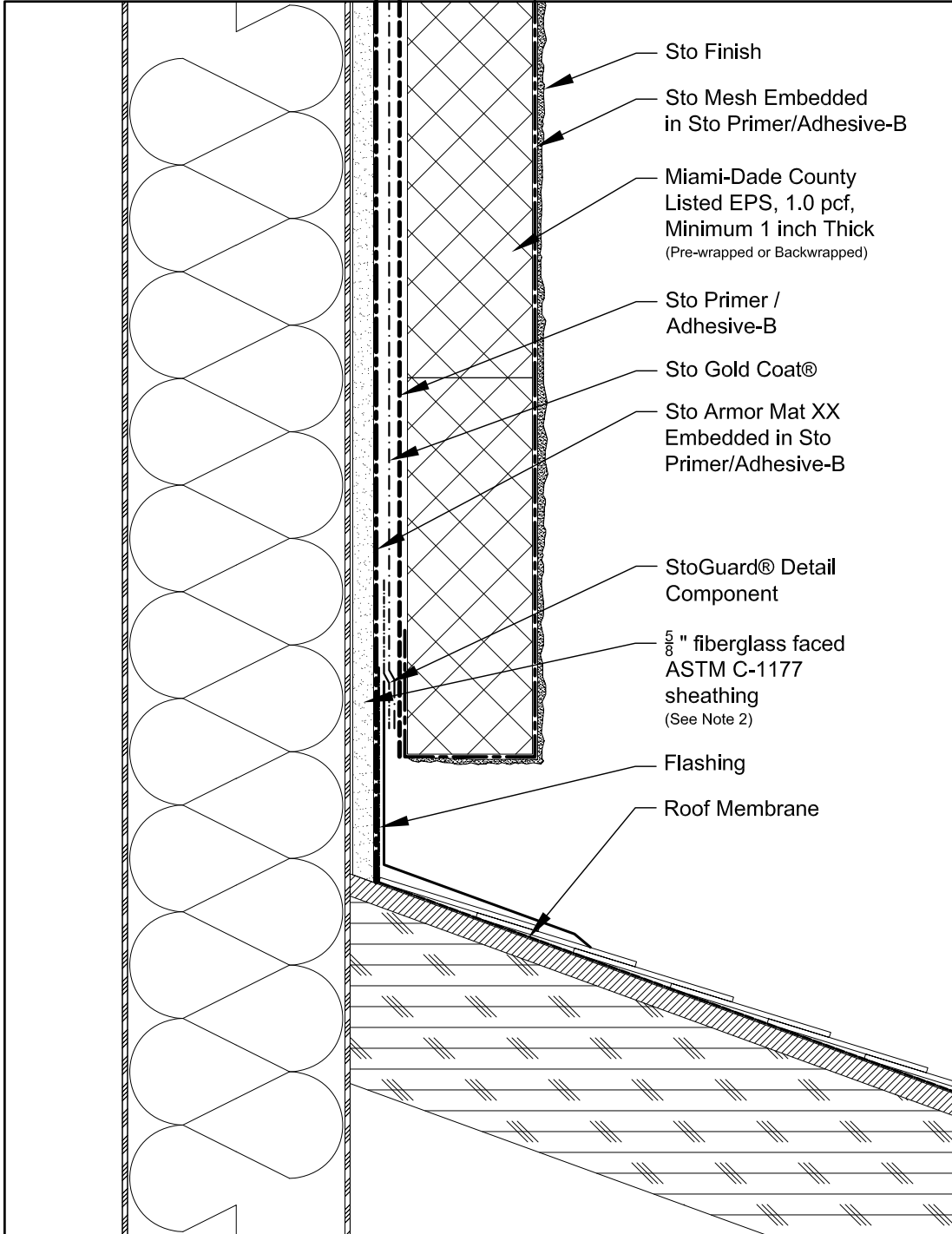
Sto products are intended for use by qualified professional contractors, not consumers, as a component of a larger construction assembly as specified by a qualified design professional, general contractor or builder. They should be installed in accordance with those specifications and Sto's instructions. Sto Corp. disclaims all, and assumes no, liability for on-site inspections, for its products applied improperly, or by unqualified persons or entities, or as part of an improperly designed or constructed building, for the nonperformance of adjacent building components or assemblies, or for other construction activities beyond Sto's control. Improper use of Sto products or use as part of an improperly designed or constructed larger assembly or building may result in serious damage to Sto products, and to the structure of the building or its components.

STO CORP. DISCLAIMS ALL WARRANTIES EXPRESSED OR IMPLIED EXCEPT FOR EXPLICIT LIMITED WRITTEN WARRANTIES ISSUED TO AND ACCEPTED BY BUILDING OWNERS IN ACCORDANCE WITH STO'S WARRANTY PROGRAMS WHICH ARE SUBJECT TO CHANGE FROM TIME TO TIME. For the fullest, most current information on proper application, clean-up, mixing and other specifications and warranties, cautions and disclaimers, please refer to the Sto Corp. website, www.stocorp.com.

StoTherm[®] ci - 1177-LM-150

Diverter Flashing at Roof Abutment

Detail No.: 10H.14.62
Date: February 2019



Notes:

1. System Components:

- 6", 16 ga. Steel Studs at 16-inches on center.
- $\frac{5}{8}$ " fiberglass faced ASTM C-1177 sheathing
- Sto Armor Mat XX Embedded in Sto Primer/Adhesive-B
- Gold Coat
- Sto Primer/Adhesive-B
- Miami-Dade County EPS, 1.0 pcf, Minimum 1-inch Thick
- Sto Mesh Embedded in Sto Primer/Adhesive-B
- Sto Finish

2. ASTM C1177 Compliant Sheathing Options:

- National Gypsum eXP
- USG Securock
- Continental Weather Defense

- Components not identified as Sto are furnished by other manufacturers and are not necessarily installed by trades who install Sto products. Refer to project specific contract documents.

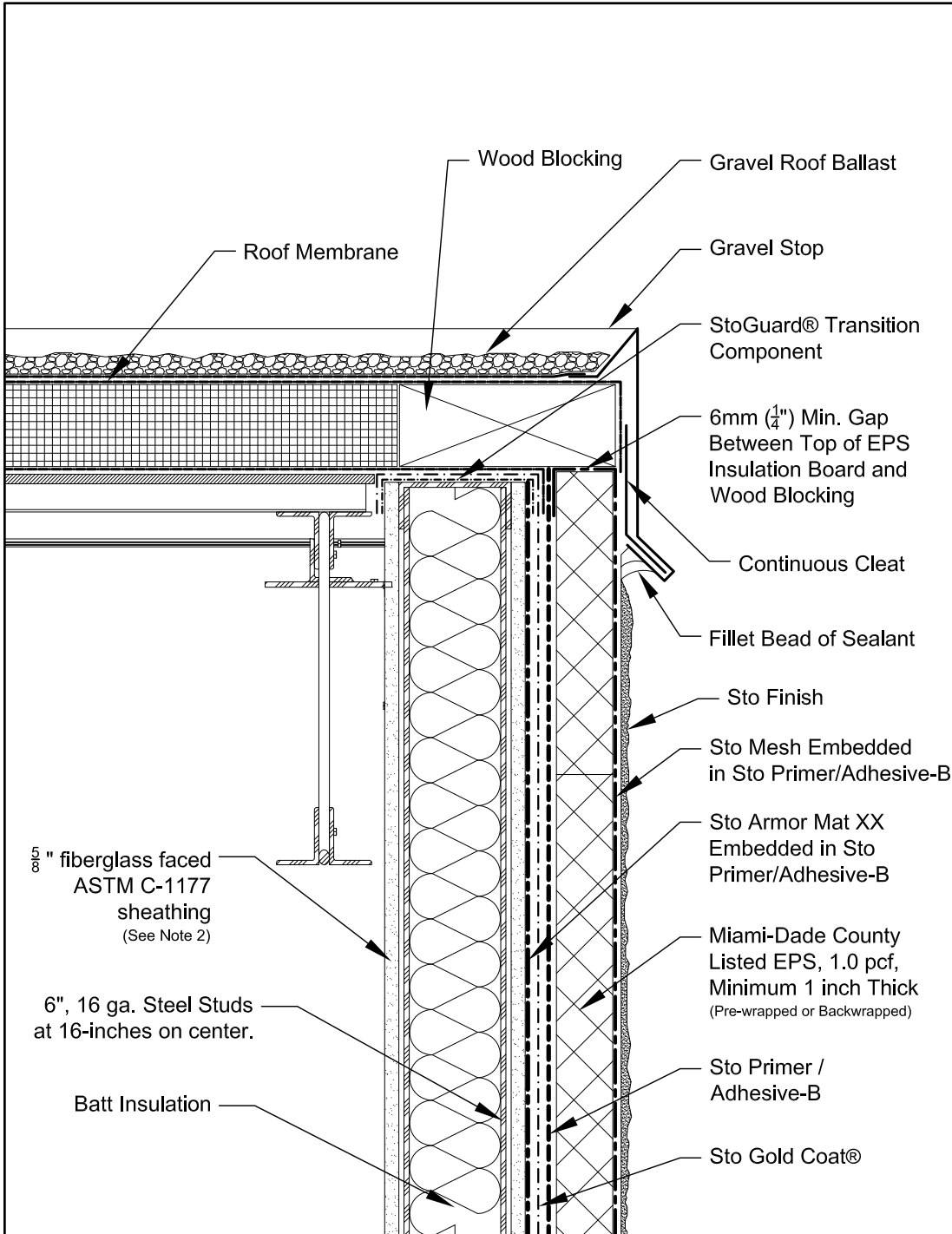
ATTENTION

Sto products are intended for use by qualified professional contractors, not consumers, as a component of a larger construction assembly as specified by a qualified design professional, general contractor or builder. They should be installed in accordance with those specifications and Sto's instructions. Sto Corp. disclaims all, and assumes no, liability for on-site inspections, for its products applied improperly, or by unqualified persons or entities, or as part of an improperly designed or constructed building, for the nonperformance of adjacent building components or assemblies, or for other construction activities beyond Sto's control. Improper use of Sto products or use as part of an improperly designed or constructed larger assembly or building may result in serious damage to Sto products, and to the structure of the building or its components.

STO CORP. DISCLAIMS ALL WARRANTIES EXPRESSED OR IMPLIED EXCEPT FOR EXPLICIT LIMITED WRITTEN WARRANTIES ISSUED TO AND ACCEPTED BY BUILDING OWNERS IN ACCORDANCE WITH STO'S WARRANTY PROGRAMS WHICH ARE SUBJECT TO CHANGE FROM TIME TO TIME. For the fullest, most current information on proper application, clean-up, mixing and other specifications and warranties, cautions and disclaimers, please refer to the Sto Corp. website, www.stocorp.com.

StoTherm® ci - 1177-LM-150 Gravel Stop

Detail No.: 10H.14.63
Date: February 2019



Notes:

1. System Components:

- 6", 16 ga. Steel Studs at 16-inches on center.
- $\frac{5}{8}$ " fiberglass faced ASTM C-1177 sheathing
- Sto Armor Mat XX Embedded in Sto Primer/Adhesive-B
- Gold Coat
- Sto Primer/Adhesive-B
- Miami-Dade County EPS, 1.0 pcf, Minimum 1-inch Thick
- Sto Mesh Embedded in Sto Primer/Adhesive-B
- Sto Finish

2. ASTM C1177 Compliant Sheathing Options:

- National Gypsum eXP
 - USG Securock
 - Continental Weather Defense
- Components not identified as Sto are furnished by other manufacturers and are not necessarily installed by trades who install Sto products. Refer to project specific contract documents.

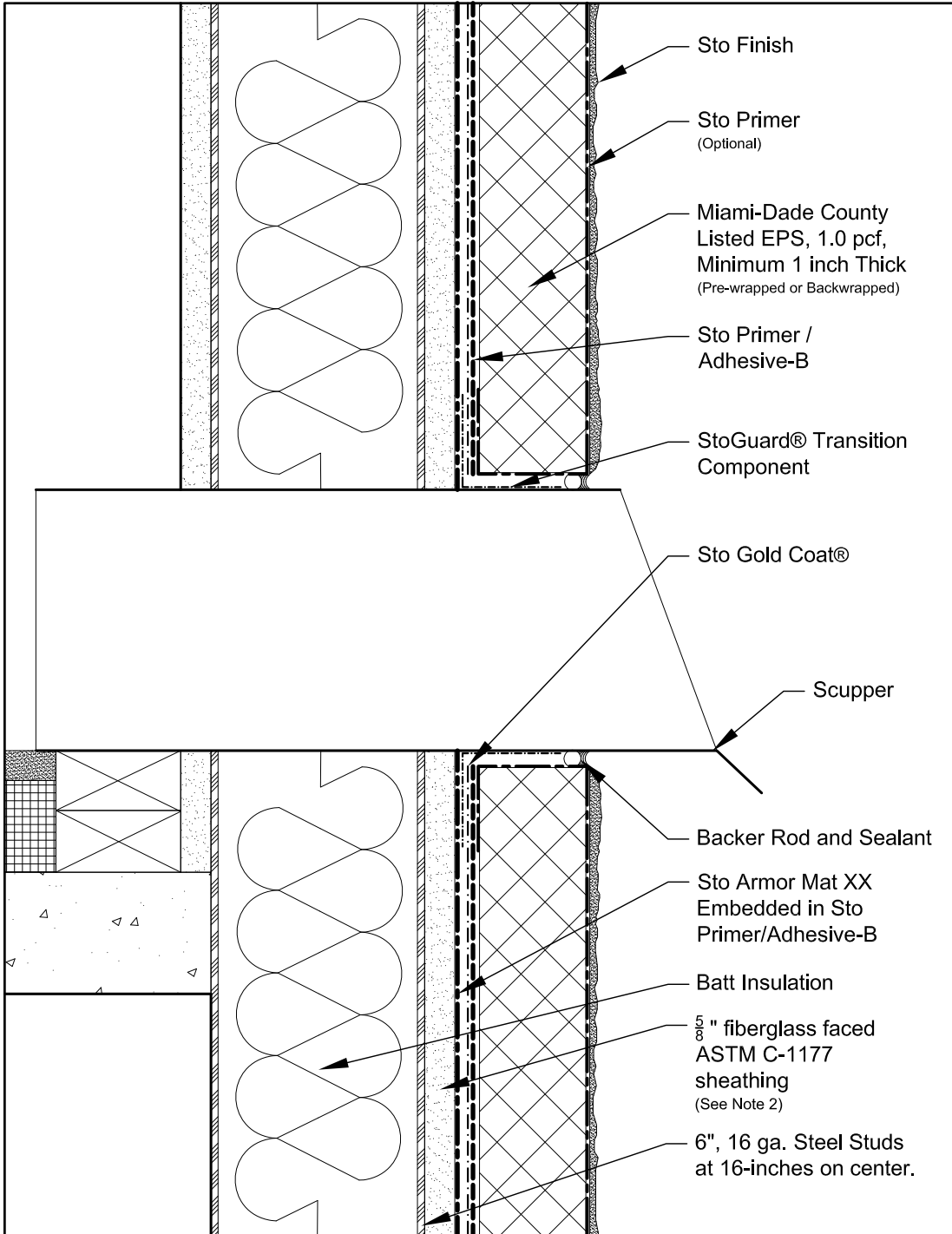
ATTENTION

Sto products are intended for use by qualified professional contractors, not consumers, as a component of a larger construction assembly as specified by a qualified design professional, general contractor or builder. They should be installed in accordance with those specifications and Sto's instructions. Sto Corp. disclaims all, and assumes no, liability for on-site inspections, for its products applied improperly, or by unqualified persons or entities, or as part of an improperly designed or constructed building, for the nonperformance of adjacent building components or assemblies, or for other construction activities beyond Sto's control. Improper use of Sto products or use as part of an improperly designed or constructed larger assembly or building may result in serious damage to Sto products, and to the structure of the building or its components.

STO CORP. DISCLAIMS ALL WARRANTIES EXPRESSED OR IMPLIED EXCEPT FOR EXPLICIT LIMITED WRITTEN WARRANTIES ISSUED TO AND ACCEPTED BY BUILDING OWNERS IN ACCORDANCE WITH STO'S WARRANTY PROGRAMS WHICH ARE SUBJECT TO CHANGE FROM TIME TO TIME. For the fullest, most current information on proper application, clean-up, mixing and other specifications and warranties, cautions and disclaimers, please refer to the Sto Corp. website, www.stocorp.com.

StoTherm[®] ci - 1177-LM-150 Scupper Penetration

Detail No.: 10H.14.65
Date: February 2019



Notes:

1. System Components:

- 6", 16 ga. Steel Studs at 16-inches on center.
- $\frac{5}{8}$ " fiberglass faced ASTM C-1177 sheathing
- Sto Armor Mat XX Embedded in Sto Primer/Adhesive-B
- Gold Coat
- Sto Primer/Adhesive-B
- Miami-Dade County EPS, 1.0 pcf, Minimum 1-inch Thick
- Sto Mesh Embedded in Sto Primer/Adhesive-B
- Sto Finish

2. ASTM C1177 Compliant Sheathing Options:

- National Gypsum eXP
 - USG Securock
 - Continental Weather Defense
- Components not identified as Sto are furnished by other manufacturers and are not necessarily installed by trades who install Sto products. Refer to project specific contract documents.

ATTENTION

Sto products are intended for use by qualified professional contractors, not consumers, as a component of a larger construction assembly as specified by a qualified design professional, general contractor or builder. They should be installed in accordance with those specifications and Sto's instructions. Sto Corp. disclaims all, and assumes no, liability for on-site inspections, for its products applied improperly, or by unqualified persons or entities, or as part of an improperly designed or constructed building, for the nonperformance of adjacent building components or assemblies, or for other construction activities beyond Sto's control. Improper use of Sto products or use as part of an improperly designed or constructed larger assembly or building may result in serious damage to Sto products, and to the structure of the building or its components.

STO CORP. DISCLAIMS ALL WARRANTIES EXPRESSED OR IMPLIED EXCEPT FOR EXPLICIT LIMITED WRITTEN WARRANTIES ISSUED TO AND ACCEPTED BY BUILDING OWNERS IN ACCORDANCE WITH STO'S WARRANTY PROGRAMS WHICH ARE SUBJECT TO CHANGE FROM TIME TO TIME. For the fullest, most current information on proper application, clean-up, mixing and other specifications and warranties, cautions and disclaimers, please refer to the Sto Corp. website, www.stocorp.com.