

StoGuard® Air and Water-Resistive Barrier

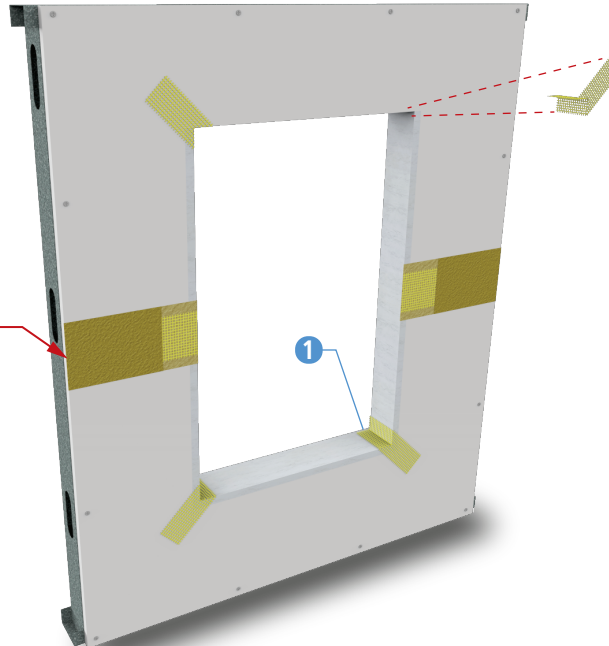
Rough Opening Protection with Sto Gold Fill® and StoGuard®Mesh

Detail No.: 22s.20M
 Date: December 2022
 Page 1 of 2

STEP 1

Place 2" (50mm) wide strip of StoGuard® Mesh lapping onto face of wall diagonally at corners of opening.

Place a minimum of 4" (100mm) wide strip of StoGuard® Mesh at all sheathing joints. Coat StoGuard® Mesh completely with Sto Gold Fill®.

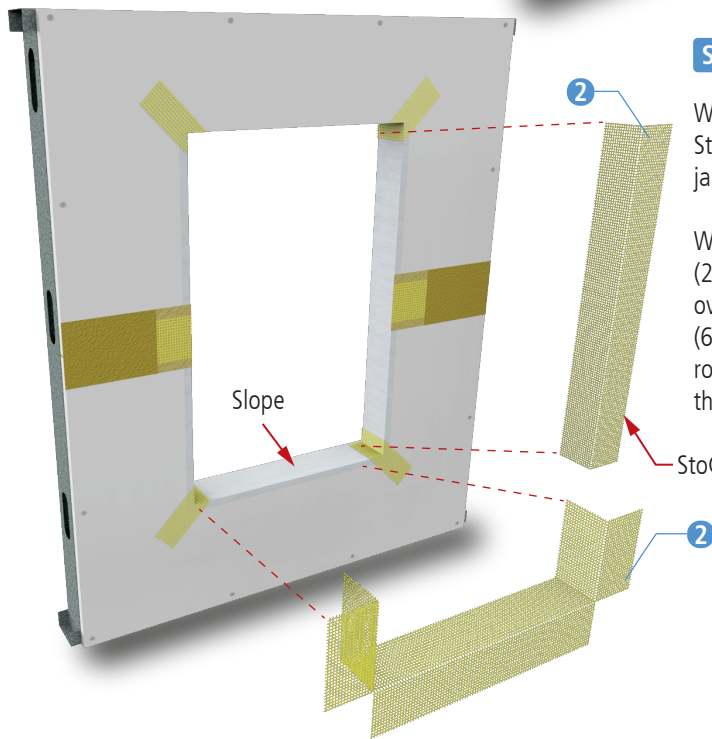


STEP 2

Wrap sill with 9" (230mm) wide StoGuard® Mesh returning up the jambs a minimum of 4" (100mm).

Wrap jambs with minimum 9" (230mm) wide StoGuard® Mesh, overlapping a minimum of 2.5" (64mm) over sill mesh. Then wrap rough opening header adhering to the same minimums as the jamb.

StoGuard®Mesh



Notes:

1. Refer to StoGuard® Detail Component Applications (Table 1.1) for StoGuard detail components; joint treatment, rough opening protection, backing for masonry anchors, or transitions to dissimilar materials, joints and seams in construction.
2. Refer to General Notes for specific information and design guidance on wall assembly components.
3. Glass mat gypsum sheathing in compliance with ASTM C1177, exterior grade and Exposure 1 wood based sheathing, or cementitious sheathing in compliance with ASTM C1325.
4. Incorporate flashing as illustrated in Details 22s.23 through 22s.24, or as per other details where flashing is shown. Provide sill wedge or other means for positive slope to exterior at sill.
5. The complete installation of window or mechanical equipment must include an air seal between the object and the StoGuard protection, inbound of the outer perimeter weather seal.
6. Components not identified as Sto are furnished by other manufacturers and are not necessarily installed by trades who install the Sto products. Refer to project specific contract documents.

Property of Sto Corp. All Rights Reserved.

ATTENTION

Sto products are intended for use by qualified professional contractors, not consumers, as a component of a larger construction assembly as specified by a qualified design professional, general contractor or builder. They should be installed in accordance with those specifications and Sto's instructions. Sto Corp. disclaims all, and assumes no, liability for on-site inspections, for its products applied improperly, or by unqualified persons or entities, or as part of an improperly designed or constructed building, for the nonperformance of adjacent building components or assemblies, or for other construction activities beyond Sto's control. Improper use of Sto products or use as part of an improperly designed or constructed larger assembly or building may result in serious damage to Sto products, and to the structure of the building or its components.

STO CORP. DISCLAIMS ALL WARRANTIES EXPRESSED OR IMPLIED EXCEPT FOR EXPLICIT LIMITED WRITTEN WARRANTIES ISSUED TO AND ACCEPTED BY BUILDING OWNERS IN ACCORDANCE WITH STO'S WARRANTY PROGRAMS WHICH ARE SUBJECT TO CHANGE FROM TIME TO TIME.
 For the fullest, most current information on proper application, clean-up, mixing and other specifications and warranties, cautions and disclaimers, please refer to the Sto Corp. website, www.stocorp.com.

www.stocorp.com



StoGuard® Air and Water-Resistive Barrier Rough Opening Protection with Sto Gold Fill® and StoGuard® Mesh

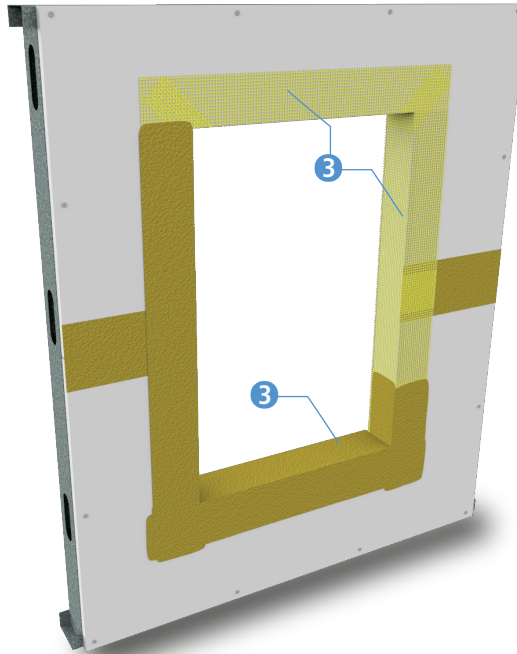
Detail No.: 22s.20M

Date: December 2022

Page 2 of 2

STEP 3

Coat StoGuard® Mesh completely with Sto Gold Fill®

**Notes:**

1. Refer to StoGuard® Detail Component Applications (Table 1.1) for StoGuard detail components; joint treatment, rough opening protection, backing for masonry anchors, or transitions to dissimilar materials, joints and seams in construction.

2. Refer to General Notes for specific information and design guidance on wall assembly components.

3. Glass mat gypsum sheathing in compliance with ASTM C1177, exterior grade and Exposure 1 wood based sheathing, or cementitious sheathing in compliance with ASTM C1325.

4. Incorporate flashing as illustrated in Details 22s.24 through 22s.24, or as per other details where flashing is shown. Provide sill wedge or other means for positive slope to exterior at sill.

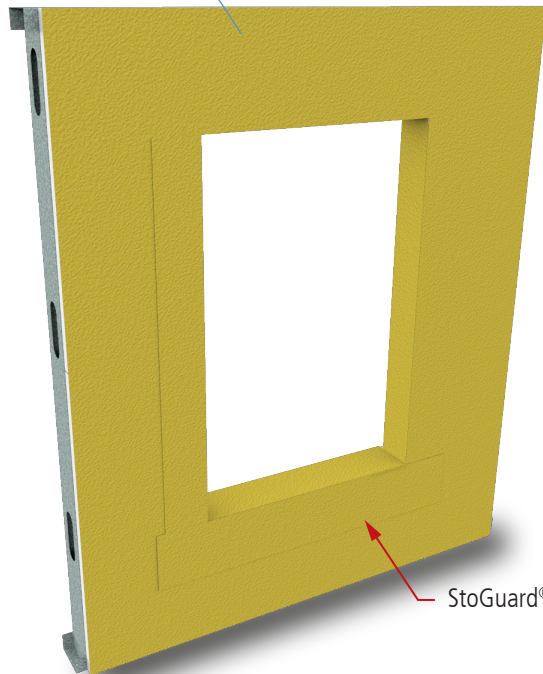
5. The complete installation of window or mechanical equipment must include an air seal between the object and the StoGuard protection, inbound of the outer perimeter weather seal.

6. Components not identified as Sto are furnished by other manufacturers and are not necessarily installed by trades who install the Sto products. Refer to project specific contract documents.

4

STEP 4

Coat the entire surface of the wall and inside surfaces of rough opening with StoGuard® Air and Water-Resistive Barrier to produce a void and pinhole free surface.



StoGuard® Air & Water-Resistive Barrier

Property of Sto Corp. All Rights Reserved.

ATTENTION

Sto products are intended for use by qualified professional contractors, not consumers, as a component of a larger construction assembly as specified by a qualified design professional, general contractor or builder. They should be installed in accordance with those specifications and Sto's instructions. Sto Corp. disclaims all, and assumes no, liability for on-site inspections, for its products applied improperly, or by unqualified persons or entities, or as part of an improperly designed or constructed building, for the nonperformance of adjacent building components or assemblies, or for other construction activities beyond Sto's control. Improper use of Sto products or use as part of an improperly designed or constructed larger assembly or building may result in serious damage to Sto products, and to the structure of the building or its components.

STO CORP. DISCLAIMS ALL WARRANTIES EXPRESSED OR IMPLIED EXCEPT FOR EXPLICIT LIMITED WRITTEN WARRANTIES ISSUED TO AND ACCEPTED BY BUILDING OWNERS IN ACCORDANCE WITH STO'S WARRANTY PROGRAMS WHICH ARE SUBJECT TO CHANGE FROM TIME TO TIME.

For the fullest, most current information on proper application, clean-up, mixing and other specifications and warranties, cautions and disclaimers, please refer to the Sto Corp. website, www.stocorp.com.

www.stocorp.com

