



Building with conscience.

Plymouth Life Centre

StoVentec® Glass setting the standards for sports and leisure centers

Facades



Plymouth Life Centre opted to use multiple Sto facade systems to achieve a seamless structure with plenty of character. Simple to install and full of creativity, the premier sports and leisure center delivers a striking appearance that incorporates two glass panel colors and eight different finish colors.



Sto Products	StoVentec® Glass + StoTherm® ci
Applicator	LSC Facades Ltd.
Architect	Archial
Media Contact	Schoeny Jones: sjones@stocorp.com Julie Chalpan: julie@focusunlimitedpr.com



Plymouth Life Centre is the city's brand new leisure and sports center. Opened in 2012, the facility cost £46.5m (\$57.7m), and became the base of operations for several international 'London 2012' hopefuls. The center offers the largest aquatic facilities of their kind in southern England, outside of the Olympic Village.

“This was one of the first StoVentec Glass installations in the UK, and it could not have been a simpler product to install.”

Mick Godwin | Operations Manager | LSC Facades Ltd.

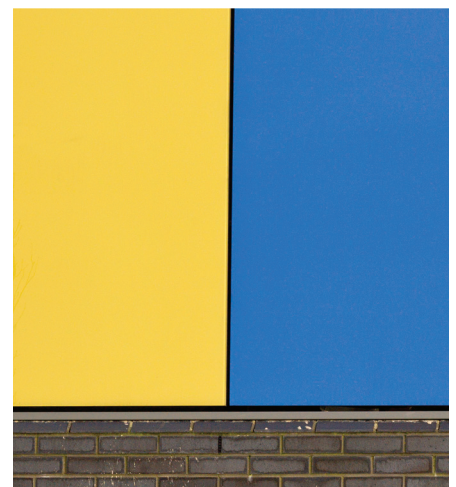
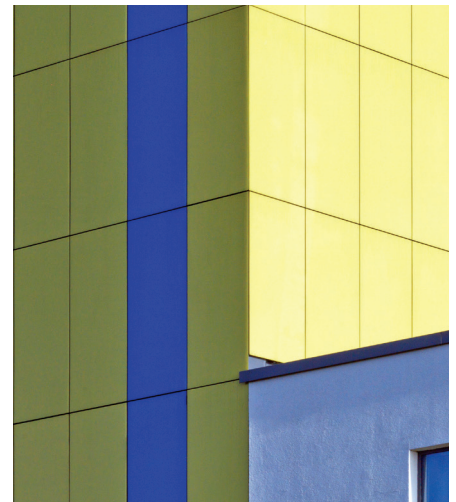
To introduce variety into a potentially severe monolithic structure, the architect decided to use multiple Sto facade systems. Across the facade, the StoVentec Glass Rainscreen® system was seamlessly combined with high performing StoTherm™ ci continuous insulation wall system.

The system was installed by specialist contractor LSC Facades Ltd. over a three month period. “This was one of the first StoVentec Glass installations in the UK, and it could not have been a simpler product to install.” says Mick Godwin, Operations Manager at LSC Facades Ltd.

“The system fixes to the building in much the same way as other Sto products we're familiar with, so we had no problems installing it.”

Project Information

- 519 glass panels were used on the Plymouth Life Centre.
- The total area of glass panels used was 1,102 m².
- Each glass panel was approximately 1m x 2.4m in size.
- Most of the glass panels were rectangular and uniform, but many are unique and have sloping edges.
- Two colors were used throughout: RAL 1023 Yellow and RAL 5012 Blue.
- Eight different colors of rendered StoTherm ci were also used.





The only limit is your imagination

Inspiration favors the open mind. With Sto, your creative exploration can take you anywhere. Our proven products give you unmatched freedom and the ability to achieve your vision in any color, any form, any texture, any material.

StoVentec Rainscreen® systems provide a wide range of aesthetic options and price points from glass, to stone, wood, mosaic and any combination in between. They bring form together with function in a complete, single source system, allowing you to create wall systems that are visually stunning, durable and thermally efficient.

Imaginative design using StoVentec Glass, with the smooth, hard, reflective look of glass, integrates effortlessly with the innovative design and high-level performance of StoTherm ci, offering a unique approach to wall system aesthetics, efficiency and installation.

Creativity Begins. **Sto Finishes.**®



Sto Americas

Sto Corp.

3800 Camp Creek Pkwy
Building 1400, Suite 120
Atlanta, GA 30331
USA

Phone 1-800-221-2397
www.stocorp.com