



Building with conscience.

# Kalamazoo Justice Center

## Form Meets Function for Newest Addition to Downtown Kalamazoo

Facades



Interiors



TowerPinkster specified StoVentec® Glass and StoVentec® Render for a compatible look with the glass rainscreen facade.



<b>Sto Products</b>	StoVentec® Glass, StoVentec® Render
<b>Architect</b>	TowerPinkster
<b>Applicator</b>	Architectural Glass & Metals, Inc. Sobie Company, Inc.
<b>Contractor</b>	CSM Group
<b>Media Contact</b>	Schoeny Jones: sjones@stocorp.com Julie Chalpan: julie@focusunlimitedpr.com



In the heart of downtown Kalamazoo, MI, is the newly constructed Kalamazoo Justice Center, which will bring together the county prosecutor's office, circuit and district courtrooms, jury assembly rooms, and the court clerk's office. The \$95 million project will span 165,000 square feet and is located next to the Kalamazoo County Administration Building on Kalamazoo Avenue.

The building features a large glass expanse on the south side of the building, a curtainwall that will provide optimum levels of daylight for the interior spaces. That same south-facing side of the building also includes a ground-floor pre-screening lobby. For the fascia of the one-story lobby space, the architects needed a product that visually extended the aesthetic of the modern glass curtainwall.

With such a challenge before them, the architect team at TowerPinkster determined that StoVentec® was the perfect fit.

## Aiming for Aesthetic Appeal

TowerPinkster was responsible for specifying finishes on the job in collaboration with the world-renowned architectural firm, HOK.

"We needed a decorative product for the fascia on the one-story lobby that had the same look and feel as the glass curtainwall," said Jennifer Swan, senior architectural project coordinator at TowerPinkster. "However, we didn't want the fascia to feel like a framed curtainwall with hardware on the top, bottom, and sides. StoVentec® Glass was perfect since it is an insulated glass panel rainscreen system without visible hardware. It got us the exact look we wanted, and we were able to pick the color behind the glass to better match the building."

StoVentec® Glass panels feature a super-resilient substrate to which back-painted and tempered glass panels are permanently bonded. Therefore, color will not wear, scratch, fade, or incur water damage, and designers can choose from 63 standard colors or custom colors if needed.

The fascia band on the lobby entrance area features nearly 700 square feet of StoVentec® Glass in an Ad Weiss Optiwhite™ Glass (9001W) color. Directly underneath, on the soffit, is 800 square feet of StoVentec® Render.

"It is nice that StoVentec® Render integrates with the glass system. In fact, we have used it on many projects for soffits because of its exceptional durability," Swan added.

StoVentec® Render employs the same key components as StoVentec® Glass to deliver superior performance. These panels are field installed, flexible, and easy to cut, which makes it simple to achieve unique architectural shapes. In addition, StoVentec® Render is available in Sto's wide variety of architectural finishes, providing the broadest range of aesthetics available in rainscreen system design.







## Visual Effect, Desirable Performance

“It literally looks like a piece of glass turning out of the curtainwall and running down the one-story portion of the building. It is a really cool visual effect,” said Swan.

In addition to aesthetics, StoVentec® is an integrated system that imparts superior weathertightness, thermal performance, and fire protection. It incorporates noncombustible continuous exterior insulation and a continuous air and moisture barrier with StoVentro™ sub-construction and StoVentec® Glass Panel to produce an advanced, high-performance wall assembly.

“While it was primarily an aesthetic choice, the insulation of the StoVentec® system overlaps the interior envelope, which is nice for thermal performance and keeping the R-value,” Swan added.

Moreover, the support from the Sto team helped with seamless installation.

“By choosing the StoVentec® systems, we had the Sto team to fall back on with questions, and they provided helpful shop drawings to work from, cutting down on issues and frustrations when installing,” said Bill Nagelhout, senior project manager with Sobie Company, Inc., the StoVentec® Render installer on the job.

Sto’s rainscreen professionals provide a range of services to support all stakeholders in the construction process, ranging from design-assist to field support and more. For decades, this has proven invaluable to project teams using Sto products and systems.

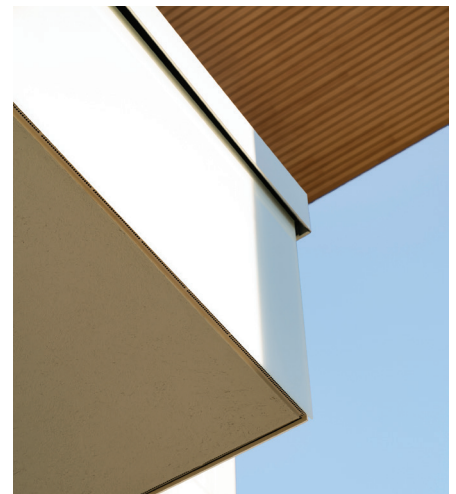
Nagelhout reinforced the importance of having access to Sto representatives throughout the project, because when small changes did arise, “the Sto team was there with support through it all.” The team at Architectural Glass & Metals (the StoVentec® Glass installer) had positive remarks about the systems as well.

“The product is of very high quality, and the aesthetic is truly unique from that of a traditional aluminum composite material panel typically utilized for these types of applications,” said Jon Mutual, vice president of operations at Architectural Glass & Metals.

## Justice Served

StoVentec® played a crucial role in achieving the look of the new Kalamazoo Justice Center, which is primed to make a positive first impression on visitors and passersby. The system provides the striking visual effect the architects desired with the added bonus of delivering on performance and durability.

“The team did a great job on installation, and the StoVentec® Glass looks absolutely beautiful on the building,” said Swan.



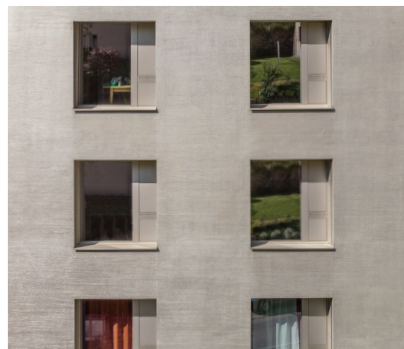


## Inspiration favors the open mind

With Sto, your creative exploration can take you anywhere. Our proven products give you unmatched freedom and the ability to achieve your vision in any color, any form, any texture, any material.

StoVentec Rainscreen systems provide a wide range of aesthetic options and price points from glass, to stone, wood, mosaic and any combination in between. They bring form together with function in a complete, single source system, allowing you to create wall systems that are visually stunning, durable and thermally efficient. Imaginative design using StoVentec Glass, with the smooth, hard, reflective look of glass, can be accentuated with an adjacent StoVentec Render system. Featuring a wide range of color and texture options, StoVentec Render extends design possibilities, and helps you create a look that is uniquely appealing.

Creativity Begins. **Sto Finishes.**®



### Sto Americas

#### Sto Corp.

3800 Camp Creek Pkwy  
Building 1400, Suite 120  
Atlanta, GA 30331  
USA

Phone 1-800-221-2397  
[www.stocorp.com](http://www.stocorp.com)