

StoPanel[®] Dri-Design[®]

Prefabricated, Engineered Wall System with advanced rainscreen protection

Facades



The StoPanel[®] Dri-Design[®] system is a fully customizable next-generation exterior wall solution that is both beautiful and versatile to your needs. Achieve the look you want with unlimited design options and custom perforations. Plus, Dri-Design Panels are easy to install and built to the highest industry standards. With Dri-Design[®] the creative possibilities are endless.





Beautiful, Adaptable and Sustainable

- Fully customizable system to achieve the look you want
- Unlimited palette of colors, finishes, materials and textures
- Custom perforations, including imaging, also available
- Minimal construction waste due to sustainable StoPanel pre-fabrication technology

Innovative Design

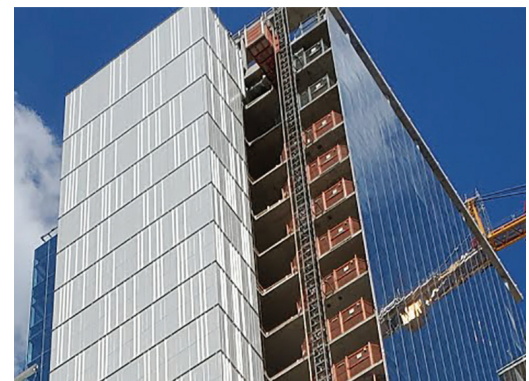
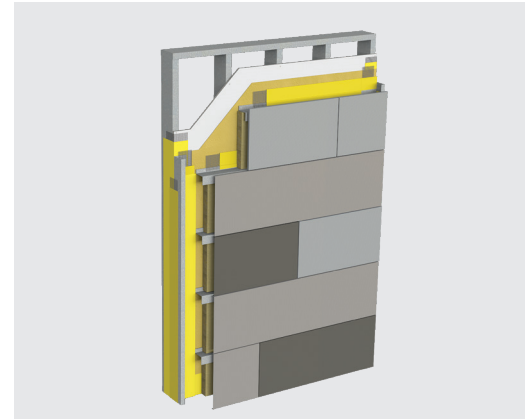
- Manufactured with single-skin metal, and therefore is non-combustible
- System employs a unique and patented interlocking design
- 100% recyclable panels attach to nearly any substrate without clips or extrusions
- Fully tested to exceed ASTM standards and the latest AAMA 508-07

Better Moisture Protection, Lower Maintenance

- Panels combine superior moisture barrier and improved water management
- Installs faster than any comparable product, saving time and money
- Metal skin not a composite, so panels will never delaminate

Manufactured to the Highest Industry Standards

- Speed, value and quality derived from off-site production of wall assembly
- Produced by experienced StoPanel affiliates located throughout the U.S., Canada and South America
- Panels are light weight, reducing loads impacting overall structure



Sto Americas

Sto Corp.

3800 Camp Creek Pkwy
Building 1400, Suite 120
Atlanta, GA 30331
USA

Phone 1-800-221-2397
www.stocorp.com

Dri-Design, Inc.

12480 Superior Court
Holland, MI 49424

Phone 616-355-2970
Fax 616-355-2972
www.Dri-Design.com

ATTENTION

Sto products are intended for use by qualified professional contractors, not consumers, as a component of a larger construction assembly as specified by a qualified design professional, general contractor or builder. They should be installed in accordance with those specifications and Sto's instructions. Sto Corp. disclaims all, and assumes no, liability for on-site inspections, for its products applied improperly, or by unqualified persons or entities, or as part of an improperly designed or constructed building, for the nonperformance of adjacent building components or assemblies, or for other construction activities beyond Sto's control. Improper use of Sto products or use as part of an improperly designed or constructed larger assembly or building may result in serious damage to this product, and to the structure of the building or its components. **STO CORP. DISCLAIMS ALL WARRANTIES EXPRESSED OR IMPLIED EXCEPT FOR EXPLICIT LIMITED WRITTEN WARRANTIES ISSUED TO AND ACCEPTED BY BUILDING OWNERS IN ACCORDANCE WITH STO'S WARRANTY PROGRAMS WHICH ARE SUBJECT TO CHANGE FROM TIME TO TIME.** For the fullest, most current information on proper application, clean-up, mixing and other specifications and warranties, cautions and disclaimers, please refer to the Sto Corp. website, www.stocorp.com.