



Building with conscience.

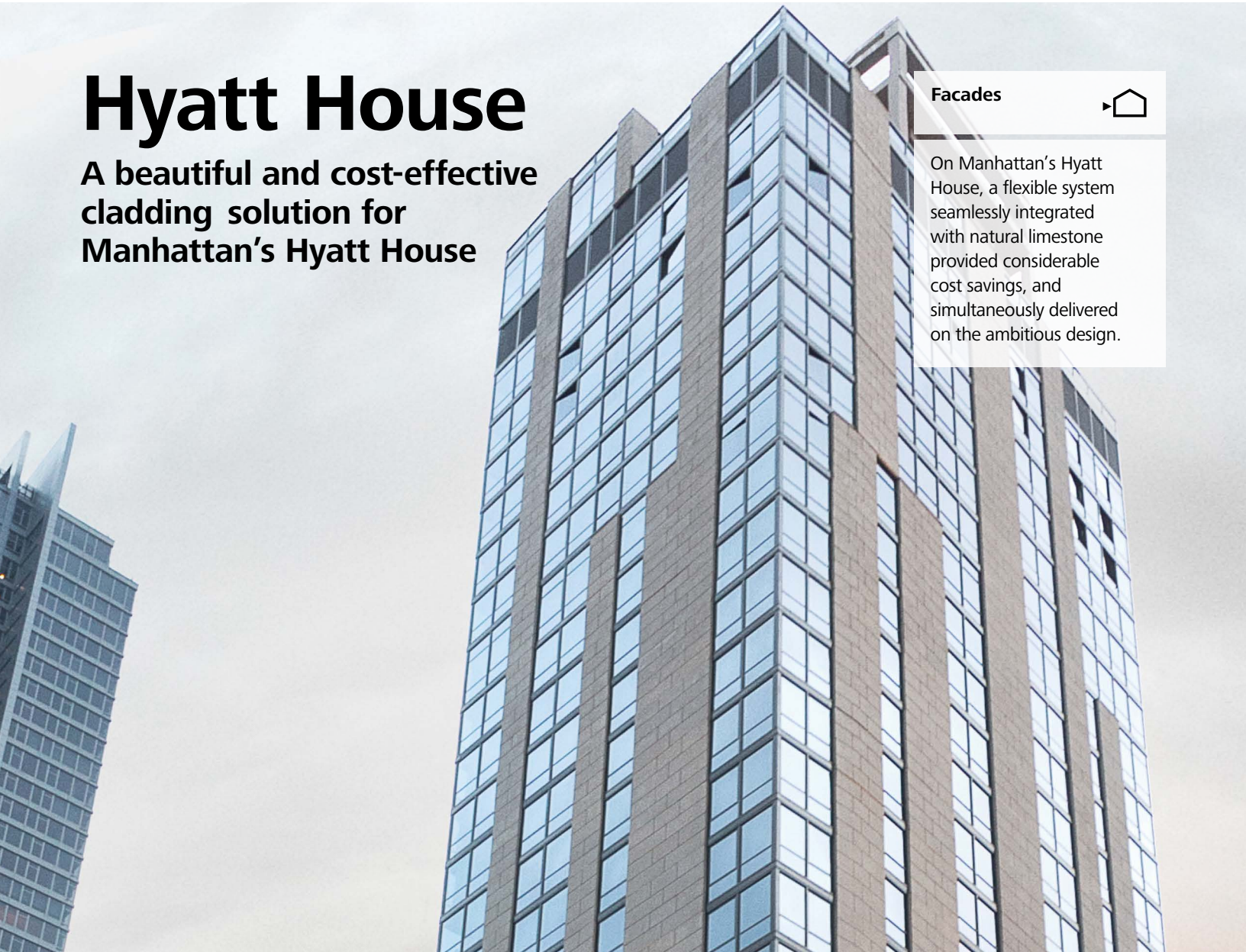
Hyatt House

A beautiful and cost-effective cladding solution for Manhattan's Hyatt House

Facades



On Manhattan's Hyatt House, a flexible system seamlessly integrated with natural limestone provided considerable cost savings, and simultaneously delivered on the ambitious design.



Sto Products	StoTherm® ci Lotusan® & StoSignature® Stone
Applicator	ECI Contracting, LLC
Architect	Wall Consultant Frank Seta Associates
Distributor	S&J Supply Company
Media Contact	Schoeny Jones: sjones@stocorp.com Julie Chalpan: julie@focusunlimitedpr.com



New York's Hyatt House hotel, with 150 guest rooms and apartment-style suites, sits at the busy Northwest corner of 6th Avenue and West 28th Street in Manhattan. The slender 32-story tower, designed by Nobutaka Ashihara Architect P.C. and developed by Lexin Capital, is a striking sight. Its abundance of smoky glass windows alternates with vertical strips that have the look and feel of traditional limestone. The stone at the building's base is comprised of two-inch manufactured limestone panels, while the cladding on the upper stories of the 300-foot building consists of StoTherm® ci Lotusan® with StoSignature® Stone to achieve the limestone aesthetic. The two complement each other and match perfectly.

“StoTherm® ci Lotusan® with the StoSignature® Stone aesthetic proved easier and lighter to work with, and there was no on-site engineering required.”

Anjo Duffy | Project Manager | ECI Contracting

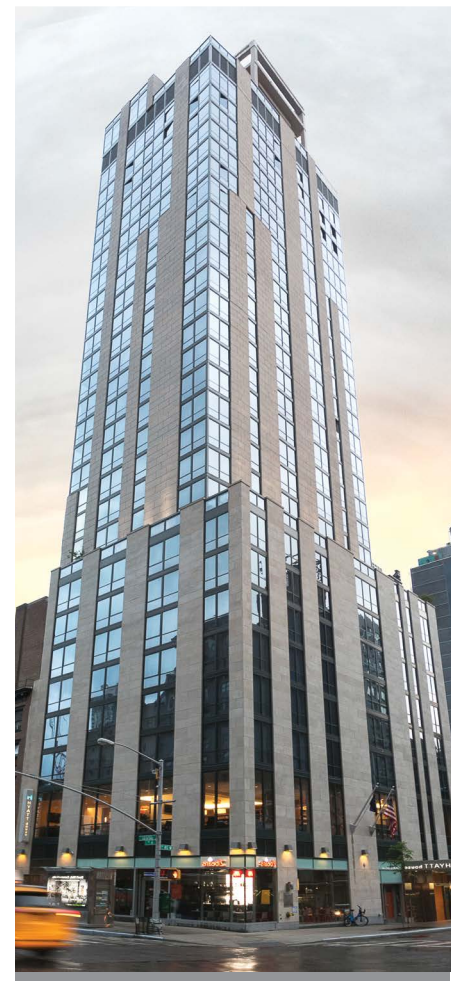
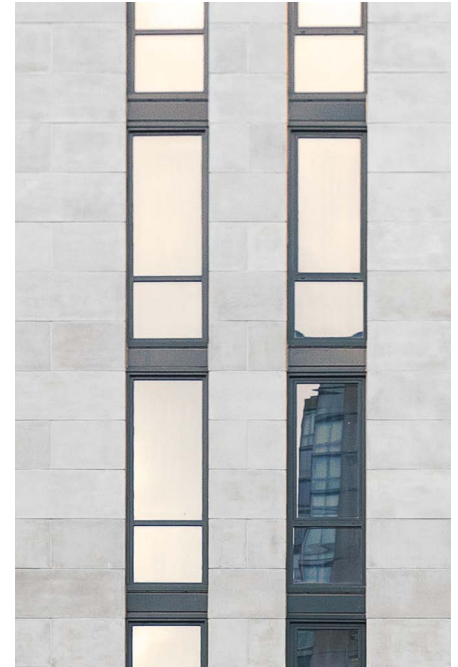
StoTherm ci Lotusan is Sto's premium continuous insulation wall system. It consists of a high-performance wall cladding that integrates several control layers: StoGuard® waterproof air barrier for air, water and vapor controls expanded polystyrene for thermal controls and StoLit® Lotusan, a textured, super-hydrophobic coating with self-cleaning properties as the watershed control layer.

As for the building's aesthetics, StoSignature Stone provides the classic beauty of stone in the form of a premium architectural wall finish with the look and feel of natural stone. Installed from the ninth floor up, the finish provides an aesthetic connection to the limestone installed on the lower floors, marrying beauty and practicality.

Like any job, the Hyatt House construction project presented some challenges. Located at one of the busiest intersections in New York City, the site attracted continuous workday traffic, both automobile and pedestrian. But the biggest challenge was the building's irregular concrete substrate and design. According to Anjo Duffy, project manager with ECI Contracting in Mount Vernon, New York, “We had to work on it one floor at a time, making adjustments and coordinating closely with the help of the Sto engineer and distributor.”

The beauty of Sto's system was that it provided a solution to the building's irregular surface conditions. The expanded polystyrene utilized in the StoTherm ci Lotusan system enabled the construction team to make custom adjustments in the insulation thickness to account for the uneven concrete substrate. “We could change the thickness at each floor level while keeping the face the same,” said Duffy. And choosing StoSignature Stone provided a very close match with the authentic limestone used as the final cladding on the base of the building. “Using the StoSignature Stone application technique with StoLit Lotusan finish gave us the ability to mimic other cladding types,” said Duffy. “StoTherm ci Lotusan with the StoSignature Stone aesthetic proved easier and lighter to work with, and there was no on-site engineering required.”

The large construction project lasted 15 months, weathering all four seasons. The team of Sto Corp., S&J Supply Company in Bronx, NY, and ECI Contracting worked as a team on the project and have continued to work together throughout the area. John Lynch, general manager of S&J Supply, has a long history with Sto, having collaborated with the company for 25 years. “The staff at Sto provided excellent assistance through the course of the job, making the process seamless and easy,” said Lynch. “The final product's appearance and performance are first rate, and this includes keeping the building surface clean.” It worked out well for everyone involved; StoSignature Stone saved the owners money without sacrificing their desire to achieve a creative look with curb appeal.





A history of turning inspiration into reality

Inspiration favors the open mind. With Sto, your creative exploration can take you anywhere. Our proven products give you the unmatched freedom and ability to achieve your vision in any color, any form, any texture and any material.

StoSignature Stone provides a building with elegant aesthetic appeal when used either as an accent or as a primary facade component. And because it is available in a variety of stone surface textures from smooth limestone to colorful granite, StoSignature Stone opens up a myriad of creative possibilities for inspired designers.

Creativity Begins. **Sto Finishes.**®



Sto Americas

Sto Corp.
3800 Camp Creek Pkwy
Building 1400, Suite 120
Atlanta, GA 30331
USA

Phone: 1-800-221-2397
www.stocorp.com